

German-US-Economic-Studies-Term Student Exchange Programm (GUEST)  
Hannover International Summer School of Economics & Management (HISSEMA)  
California State Polytechnic University (CalPoly), Pomona

# Agenda

## **NORD/LB at a glance**

Torsten Windels, Economist

## **The European/German Banking System**

Torsten Windels, Economist

## **Some thoughts about the new US trade policy**

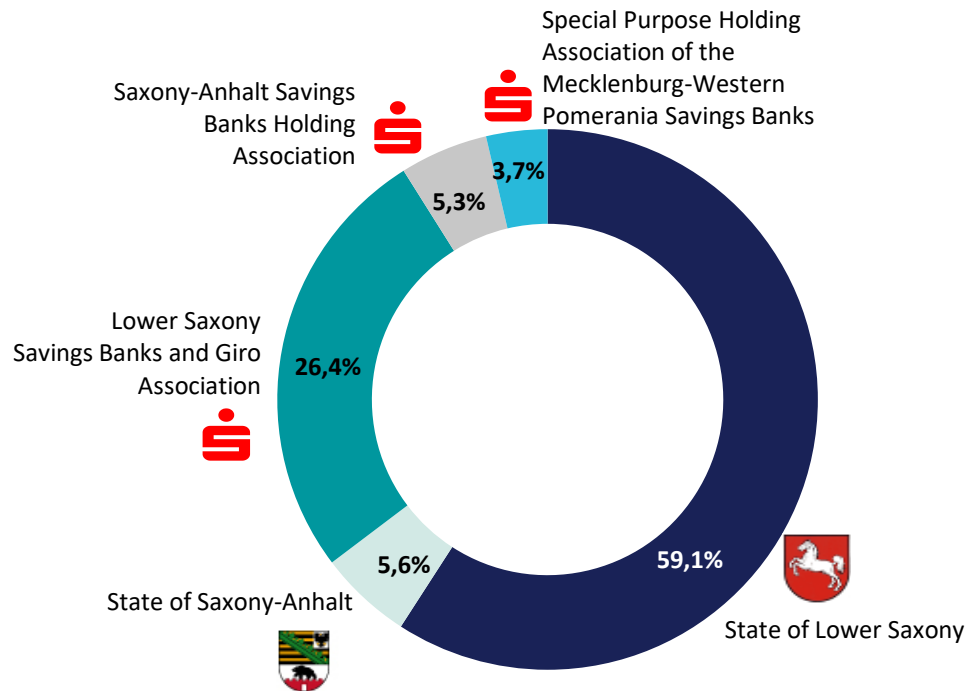
Tobias Basse, NORD/LB Fixed Income & Macro Research

**“Varieties of Capitalism”** (2001, Peter A. Hall (US Political Scientist), David Soskice (British Economist))

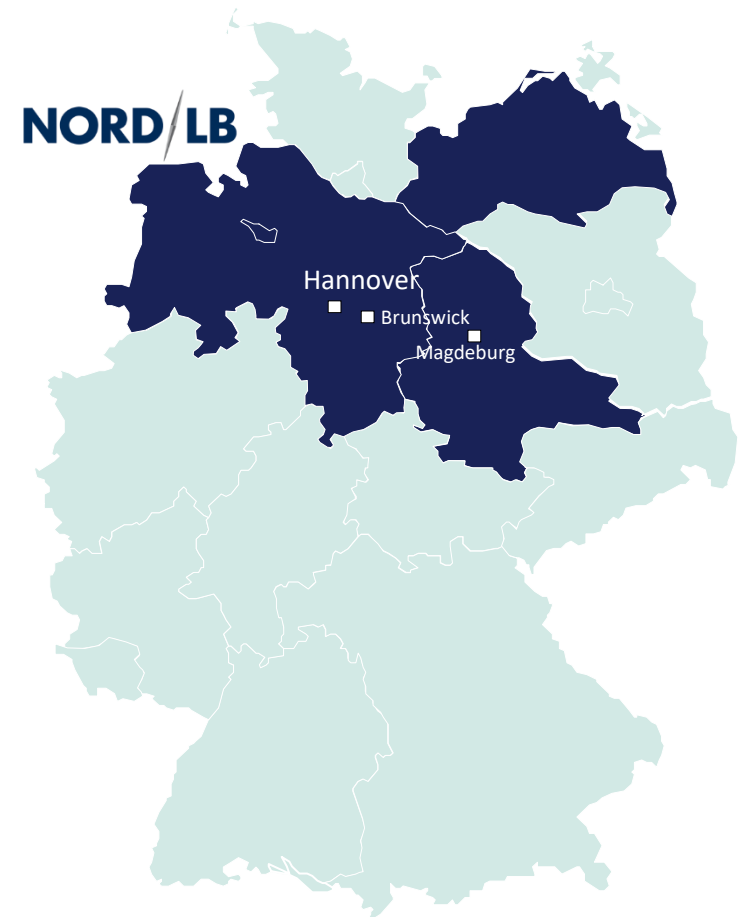
Torsten Windels, Economist

# Ownership structure and regional network.

## Ownership Structure<sup>1,2</sup>

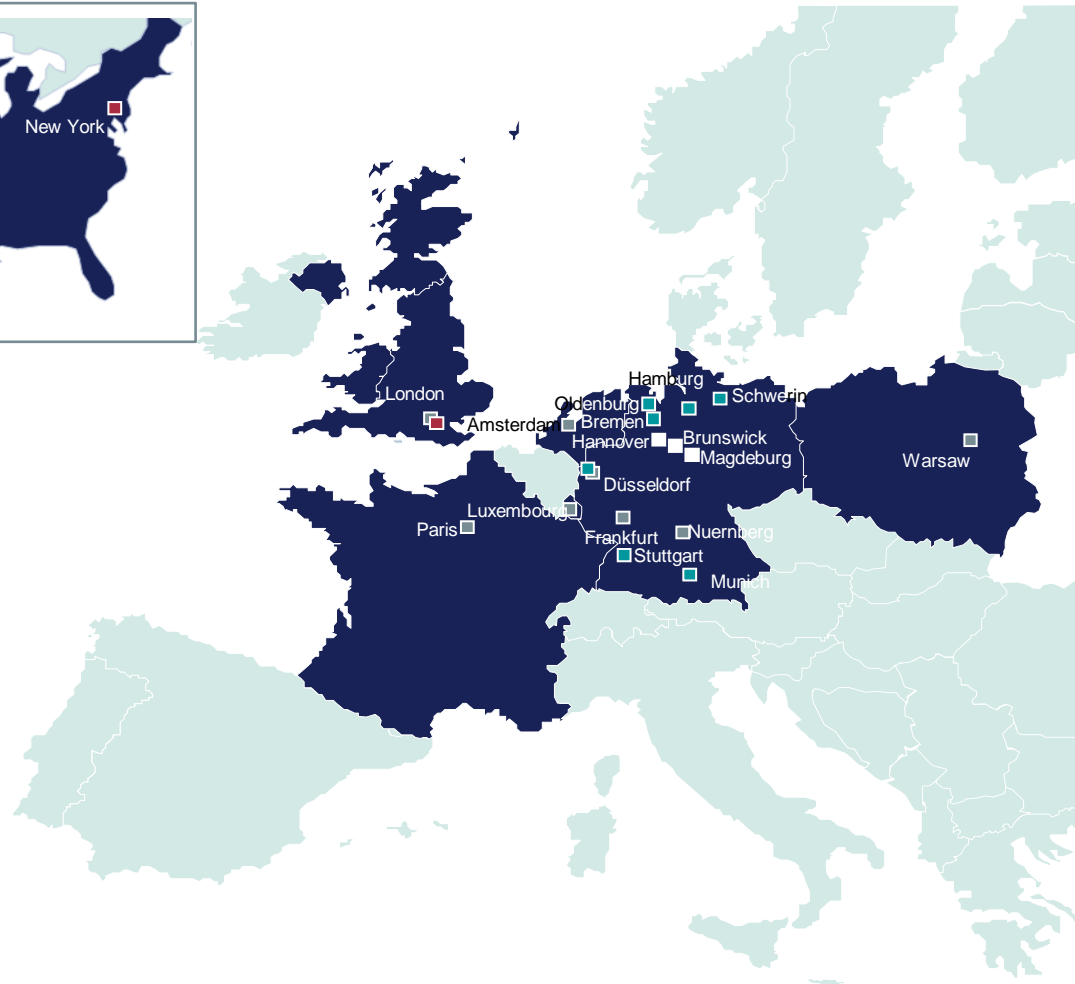


## Headquarters and ownership region



- 1) Total differences are rounding differences
- 2) As at 31 December 2018

## Represented in important financial and trade centres worldwide.



- **Head offices**  
Hanover, Brunswick, Magdeburg
- **Branches worldwide**  
London, New York, Singapore, Shanghai
- **German branches**  
Bremen, Duesseldorf, Hamburg, Munich, Oldenburg, Schwerin, Stuttgart and approx. 100 branches of Braunschweigische Landessparkasse
- **Subsidiaries and bank holdings**  
Deutsche Hypothekbank, NORD/LB Luxembourg Covered Bond Bank



## Our business segments 2018.



### Private and Commercial Customers

- Private customer business
- Private Banking
- Commercial customer business
- Insurance services for private customers in cooperation with public insurances in Lower Saxony



### Corporate Customers

- Corporate customer business
- Agricultural Banking
- Finance with public and cooperative housing associations
- Corporate Finance
- Leasing



### Savings Bank Network Customers

- Savings Bank Network/ extended network
- Corporate customers/ syndication loans
- Municipal customers



### Markets

Business with

- Institutional customers
- Savings banks/ financial institutions
- Public-sector customers



### Energy and Infrastructure Customers

- Renewable energy finance
- Infrastructure finance



### Real Estate Banking Customers

- Commercial real estate finance
- International social care property finance



### Ship Customers

Ship finance

- Container vessels
- Bulker
- Tanker
- Multi purpose vessels
- Offshore Oil & Gas
- Cruise ships / Ferries



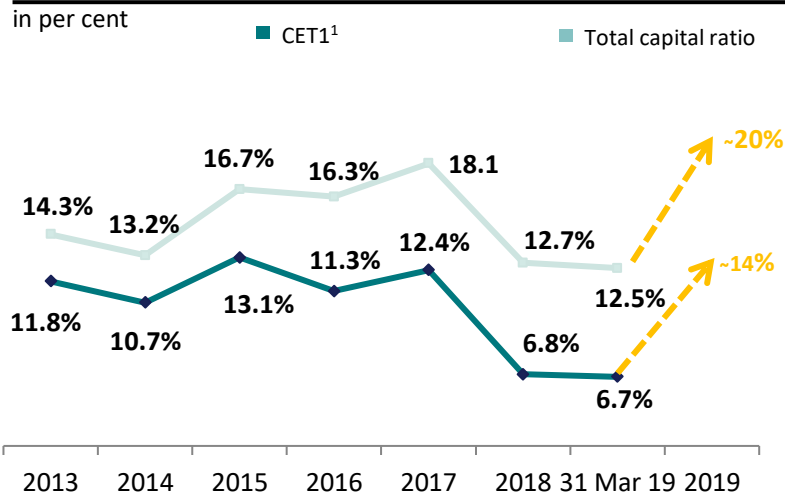
### Aircraft Customers

Aircraft finance

- Narrow-/Wide-bodies
- Freighters
- Regional Jets
- Turboprops
- Helicopter
- Spare Engines
- Finance/Operating Lease

Capital ratios fell temporarily due to annual loss 2018. Strategic reduction of total assets in the long run.

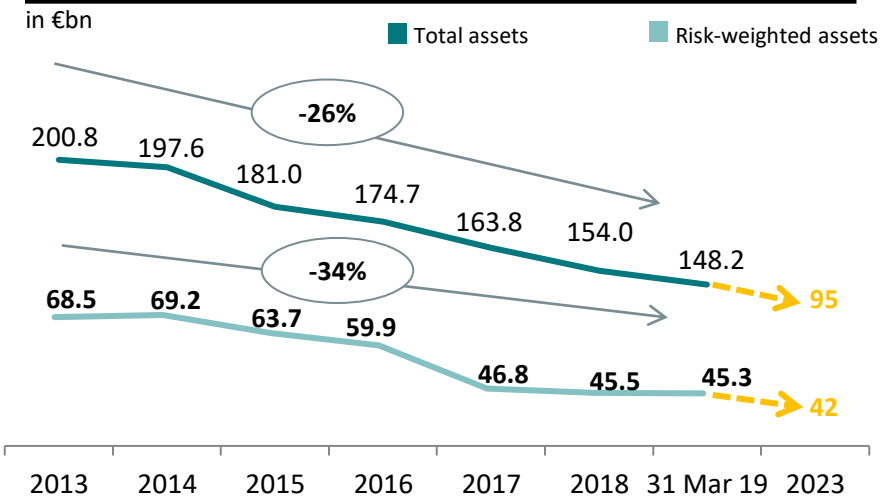
### Equity ratios (CET1)<sup>1,2,3</sup>



#### SREP minimum requirements (P2R)

CET1 <sup>1</sup>	since 1 Jan 2018	9.60 %
	since 1 Mar 2019	10.57 %
Total capital ratio	since 1 Jan 2018	13.10 %
	since 1 Mar 2019	14.07 %

### Total assets and RWA<sup>3</sup>



#### Ratios

LCR ratio	31 Mar 2019	150 %
	31 Dec 2018	150 %
Leverage ratio	31 Mar 2019	2.1 %
	31 Dec 2018	2.1 %

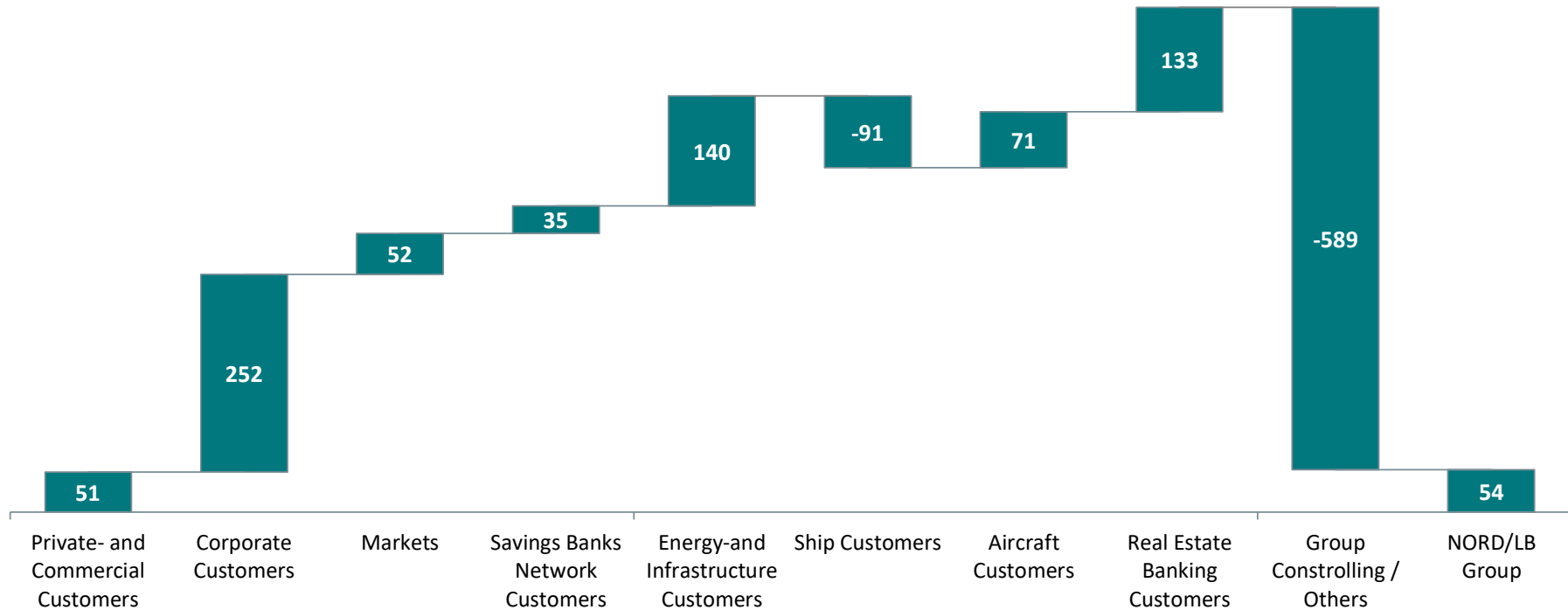
- 1) CET1 (Common Equity Tier 1)
- 2) 2010 to 2013: SolV/HGB, since 2014 CRR/Basel III (phase-in)
- 3) Due to the adjustment of regulatory data as at 31 December 2017, the prior-year figures were adjusted accordingly

Good diversification throughout the business segments.

## Operative earnings of NORD/LB Group<sup>1,2</sup>

as at 31 Dec 2018

in €m



1) Earnings before loan loss provisions, reorganisation/restructuring and taxes

2) Total differences are rounding differences

# Agenda

## **NORD/LB at a glance**

Torsten Windels, Economist

## **The European/German Banking System**

Torsten Windels, Economist

## **Some thoughts about the new US trade policy**

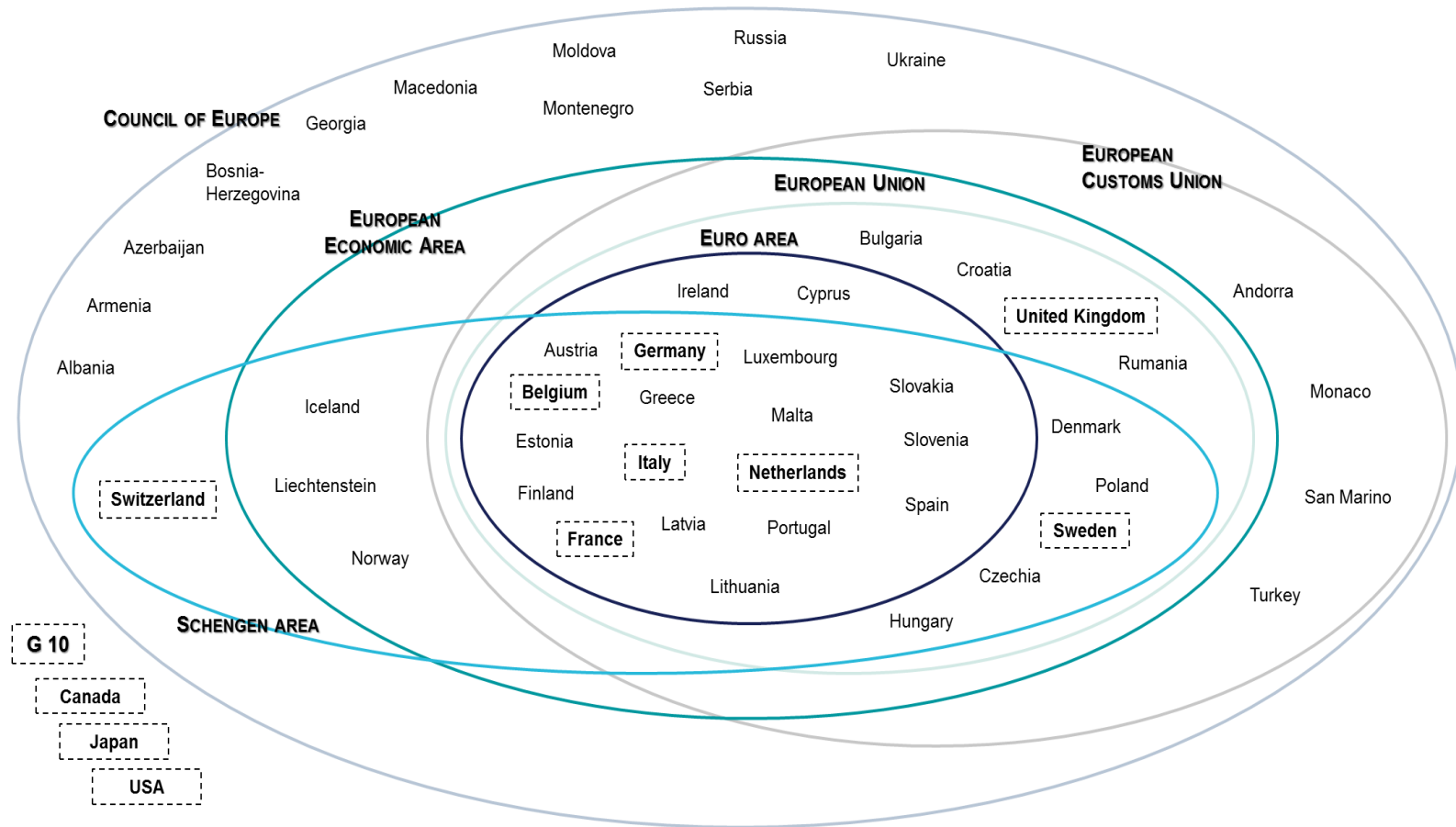
Tobias Basse, NORD/LB Fixed Income & Macro Research

**“Varieties of Capitalism”** (2001, Peter A. Hall (US Political Scientist), David Soskice (British Economist))

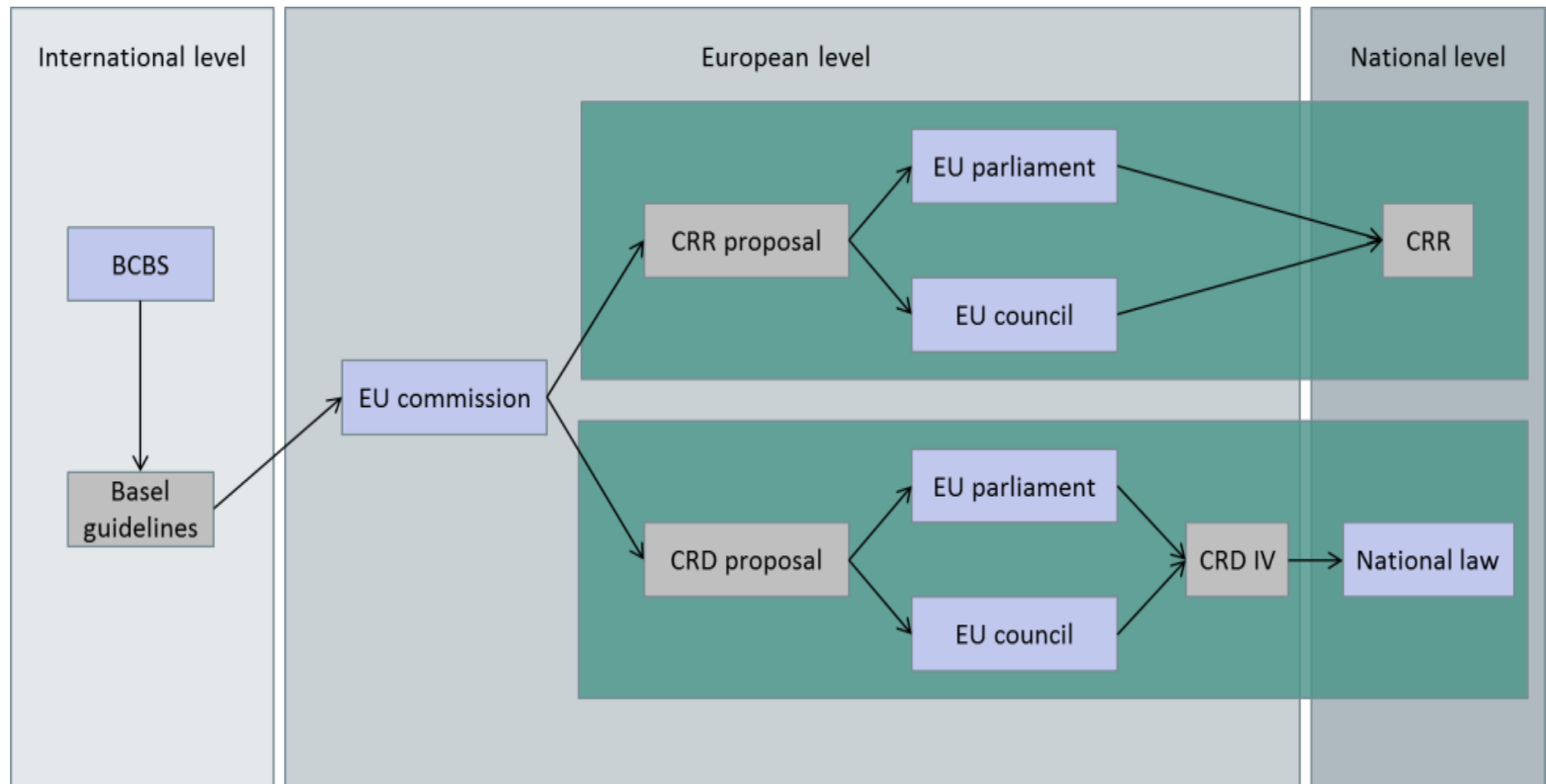
Torsten Windels, Economist



# Banking Supervisory: Members in the Euro-Area, EU, EEA, European Customs Union, Schengen-Area, Council of Europe and the G10

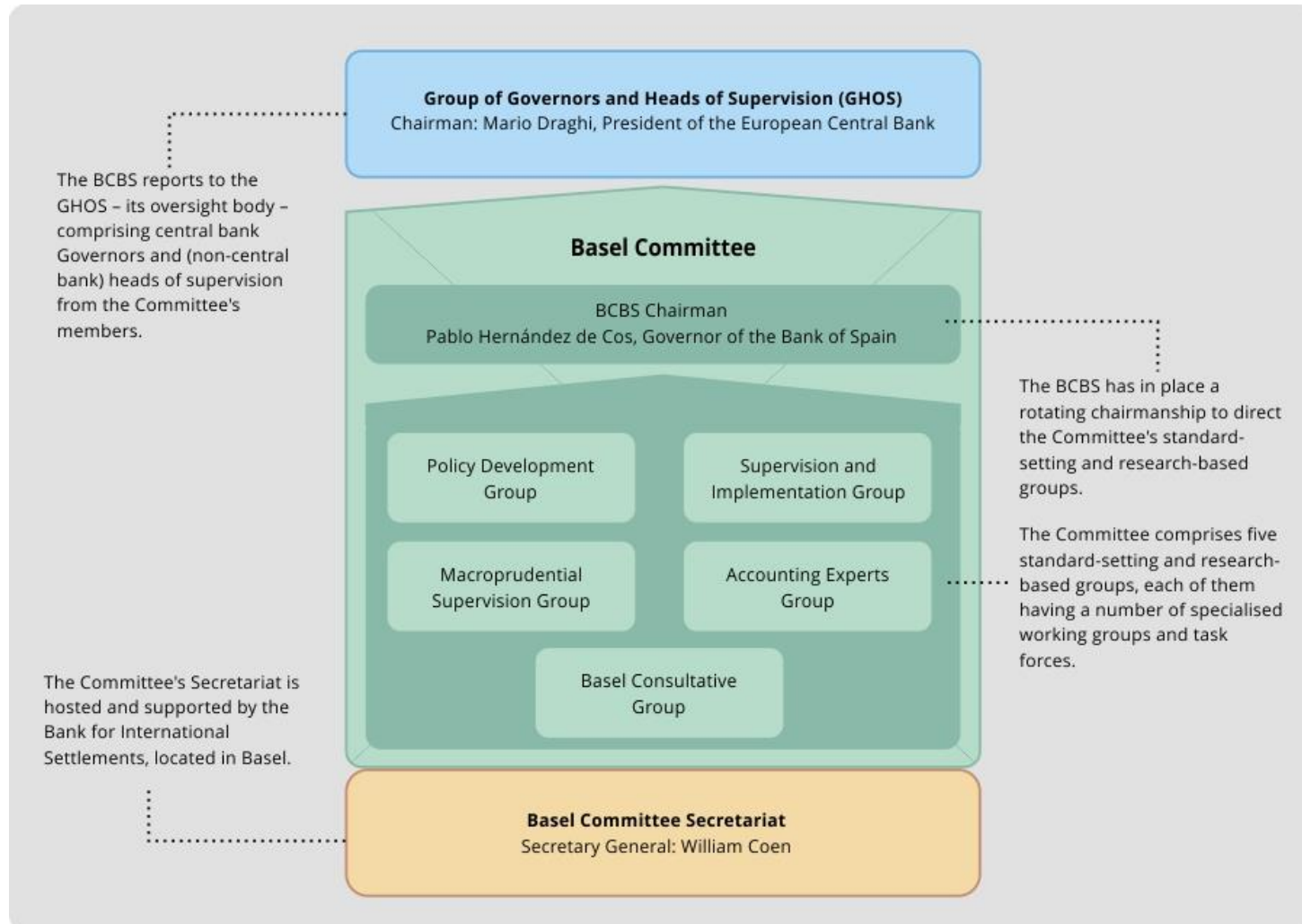


# Banking Supervisory: From BCBS (Basel Committee on Banking Supervision) to National law



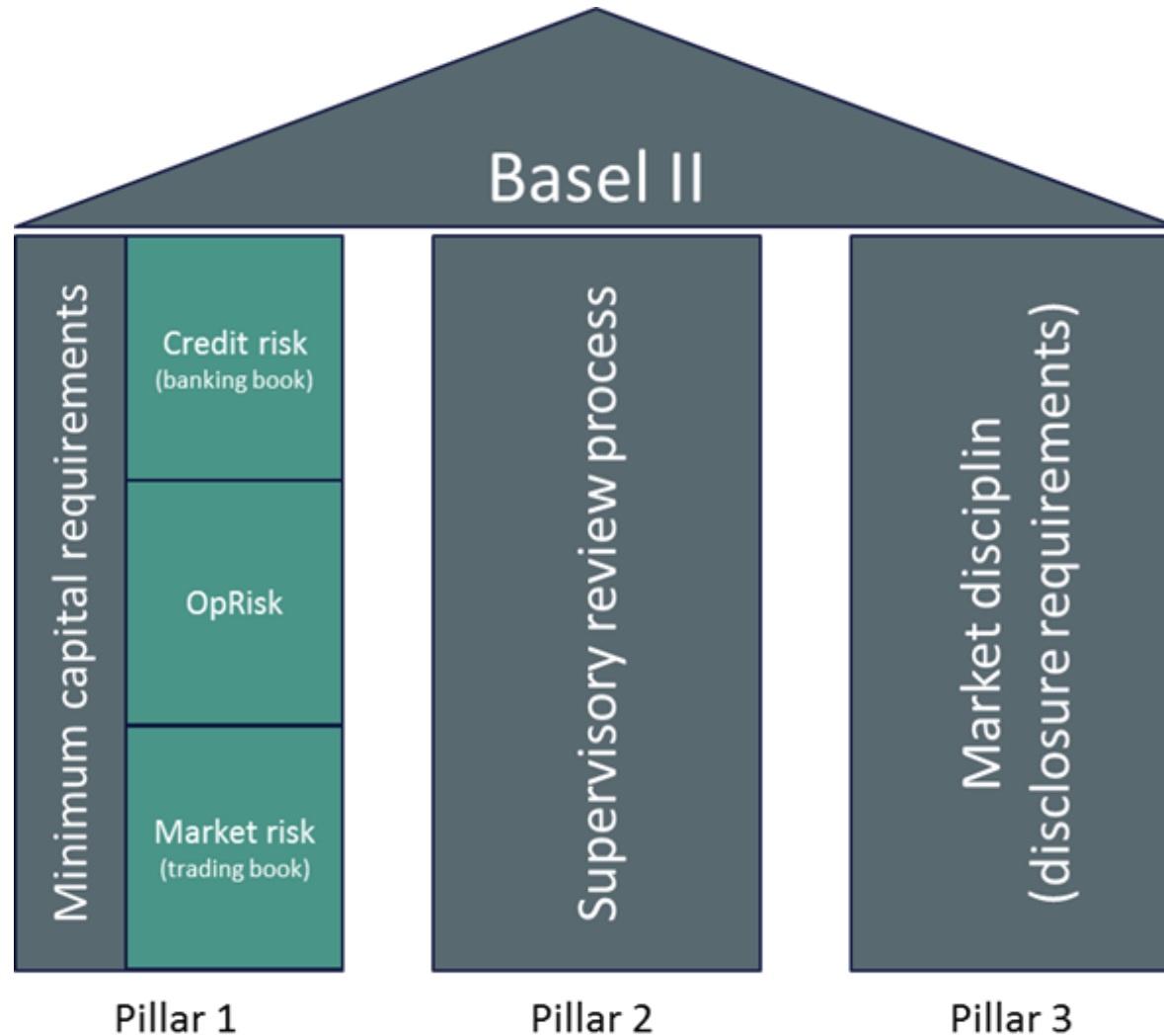
Source: NORD/LB Fixed Income & Macro Research

## International Banking Regulation: BCBS (Basel Committee on Banking Supervision)



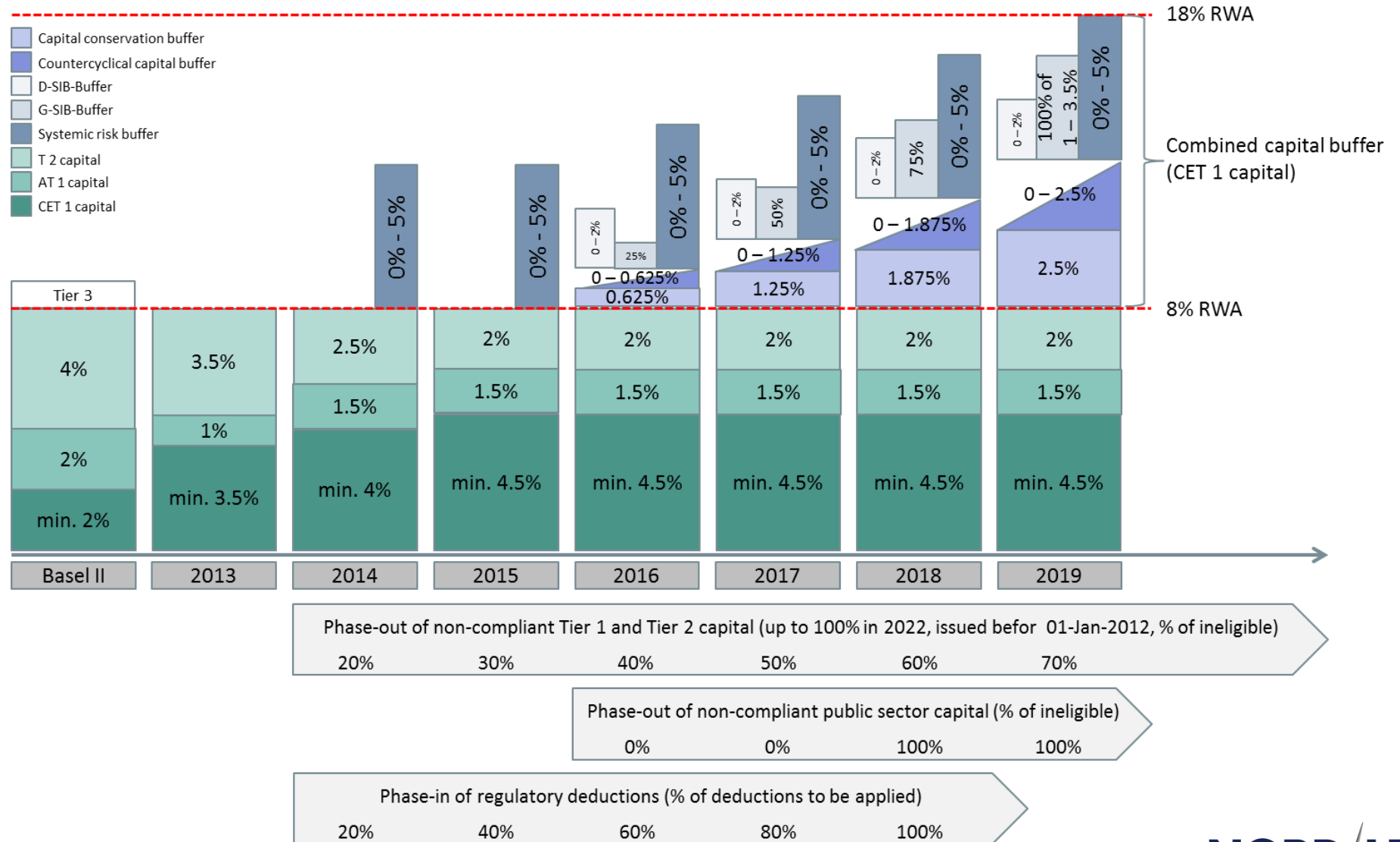
Source: BIS

## Banking Supervisory: The three pillar system (Basel II (1996), Basel I (1988))



Source: NORD/LB Fixed Income & Macro Research

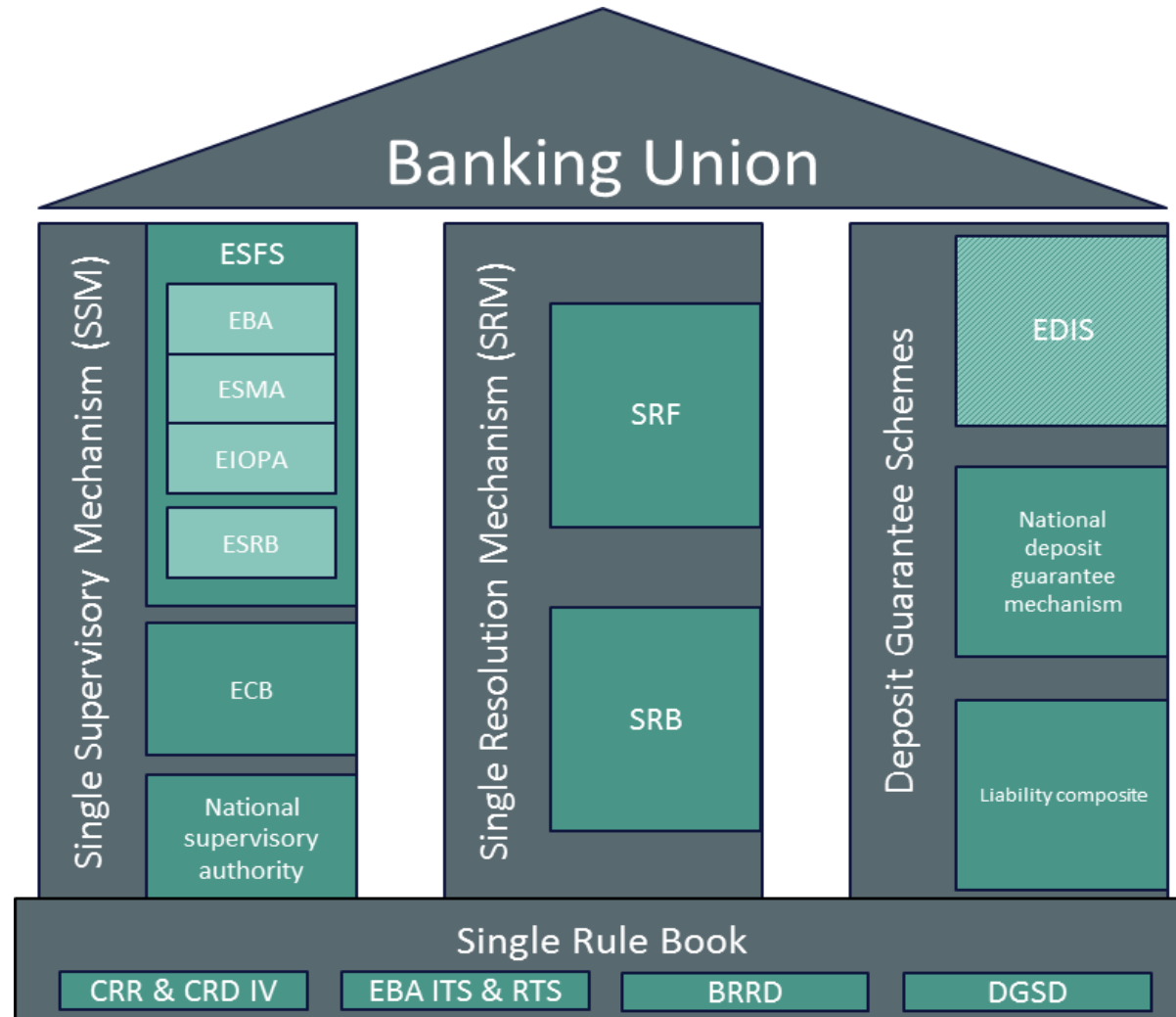
# Banking Supervisory: Equity requirements since Basel II



## Banking Supervisory: List of Global Systemic Important Banks (G-SIBs, Nov. 2018)

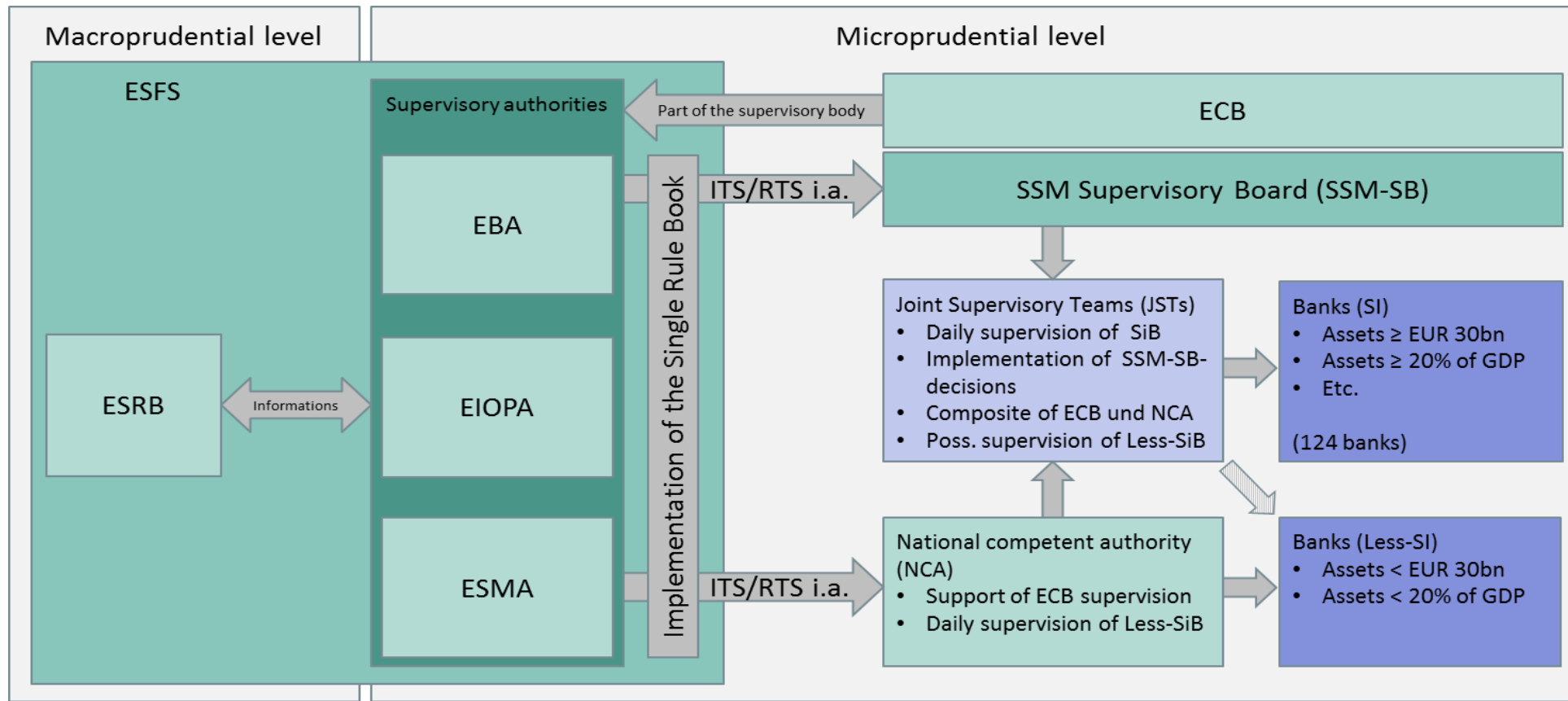
FSB's G-SIB list		
G-SIB-bucket	Ratio of G-SIB-buffer	G-SIBs (alphabetical order within each bucket)
5	3.5%	(empty)
4	2.5%	JP Morgan Chase
3	2.0%	Citigroup Deutsche Bank HSBC
2	1.5%	Bank of America Bank of China Barclays BNP Paribas Goldman Sachs Industrial and Commercial Bank of China Ltd. Mitsubishi UFJ FG Wells Fargo
1	1.0%	<div> Agricultural Bank of China Bank of New York Mellon China Construction Bank Credit Suisse Groupe BPCE Groupe Crédit Agricole ING Bank Mizuho FG </div> <div> Morgan Stanley Royal Bank of Canada Santander Société Générale Standard Chartered State Street Sumitomo Mitsui FG UBS UniCredit Group </div>

## Banking Supervisory: European Banking Union (based on Basel III regulation)



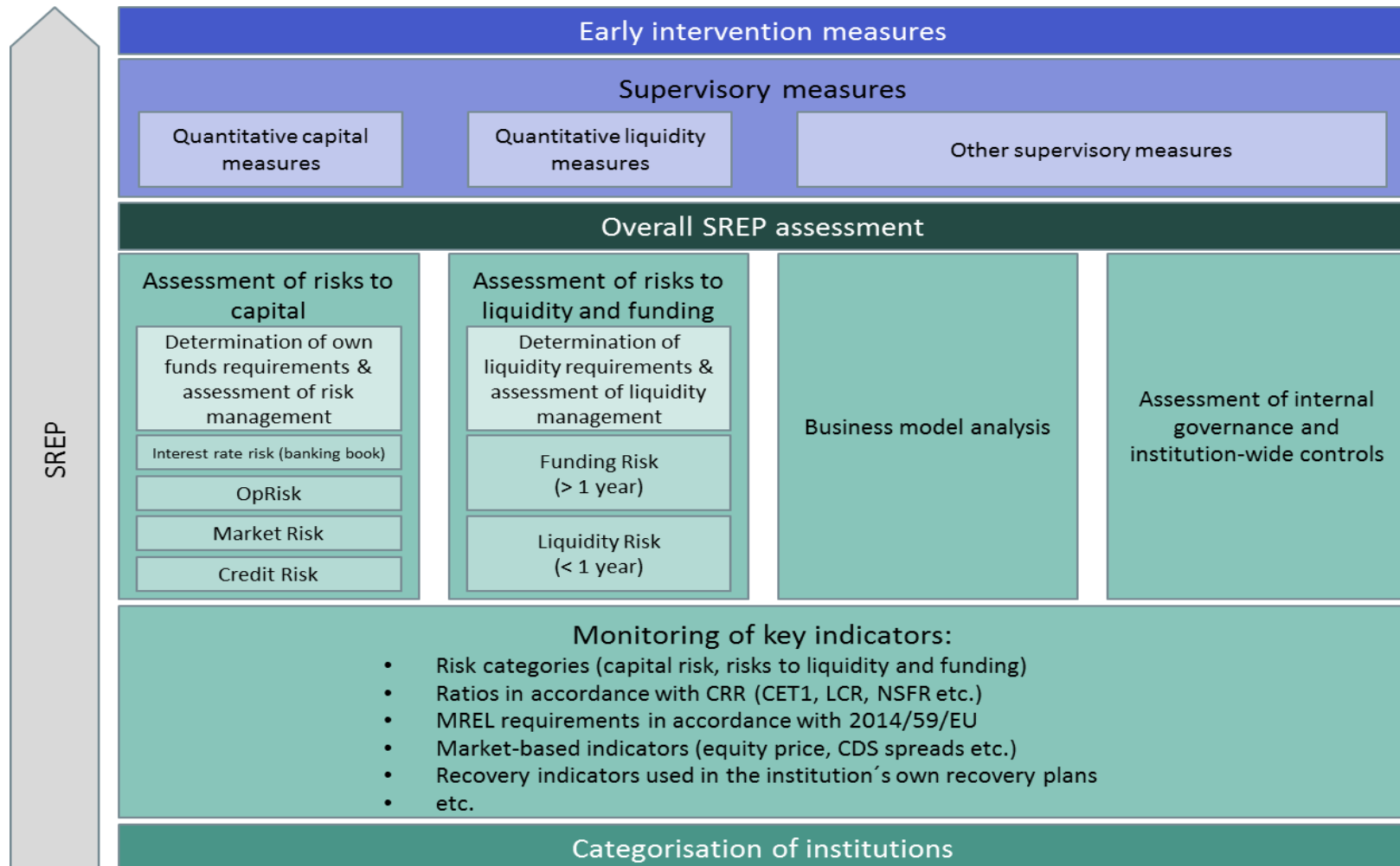
Source: NORD/LB Fixed Income & Macro Research

# Banking Supervisory: Banking supervision in the context of the SSM

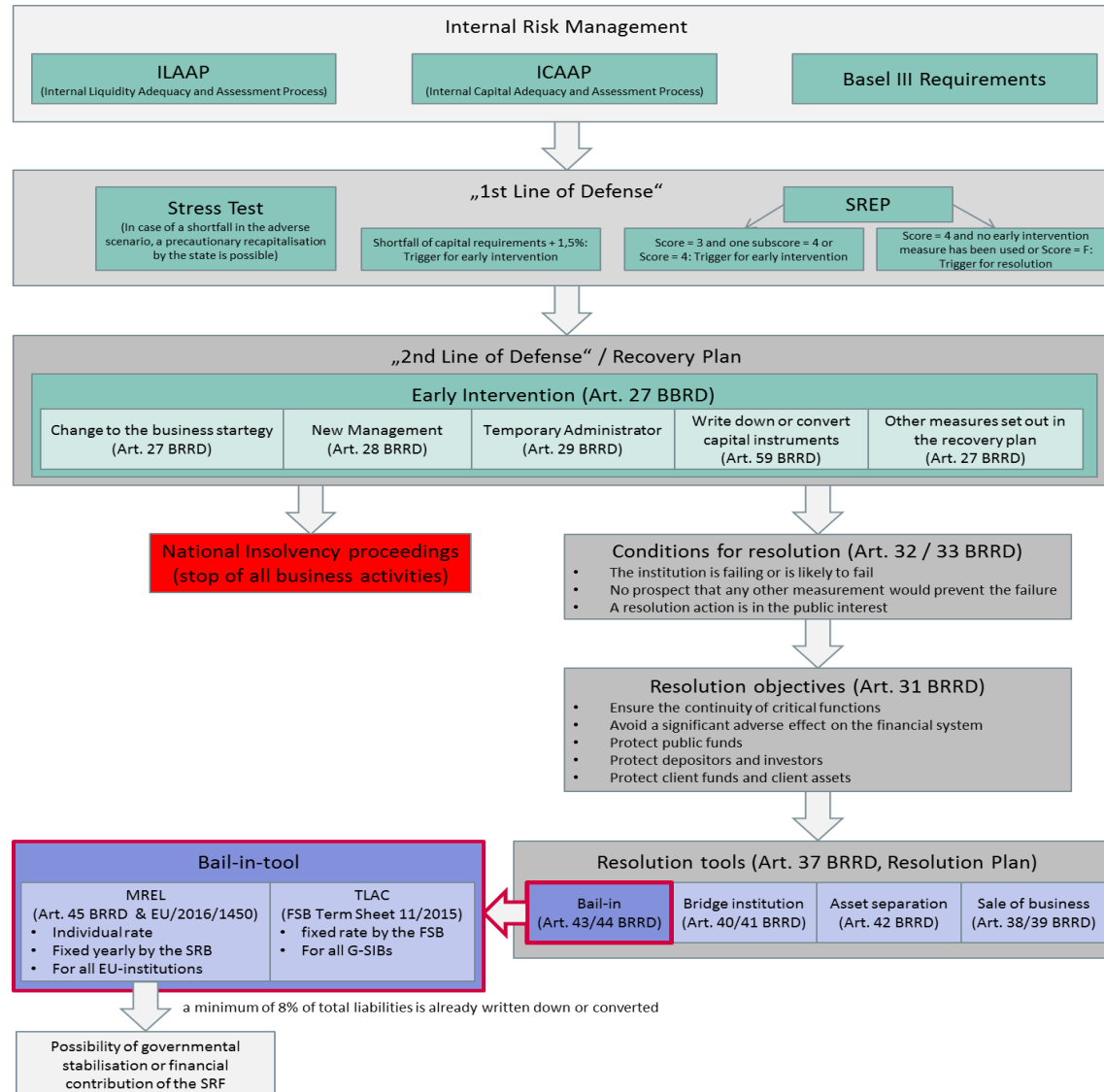




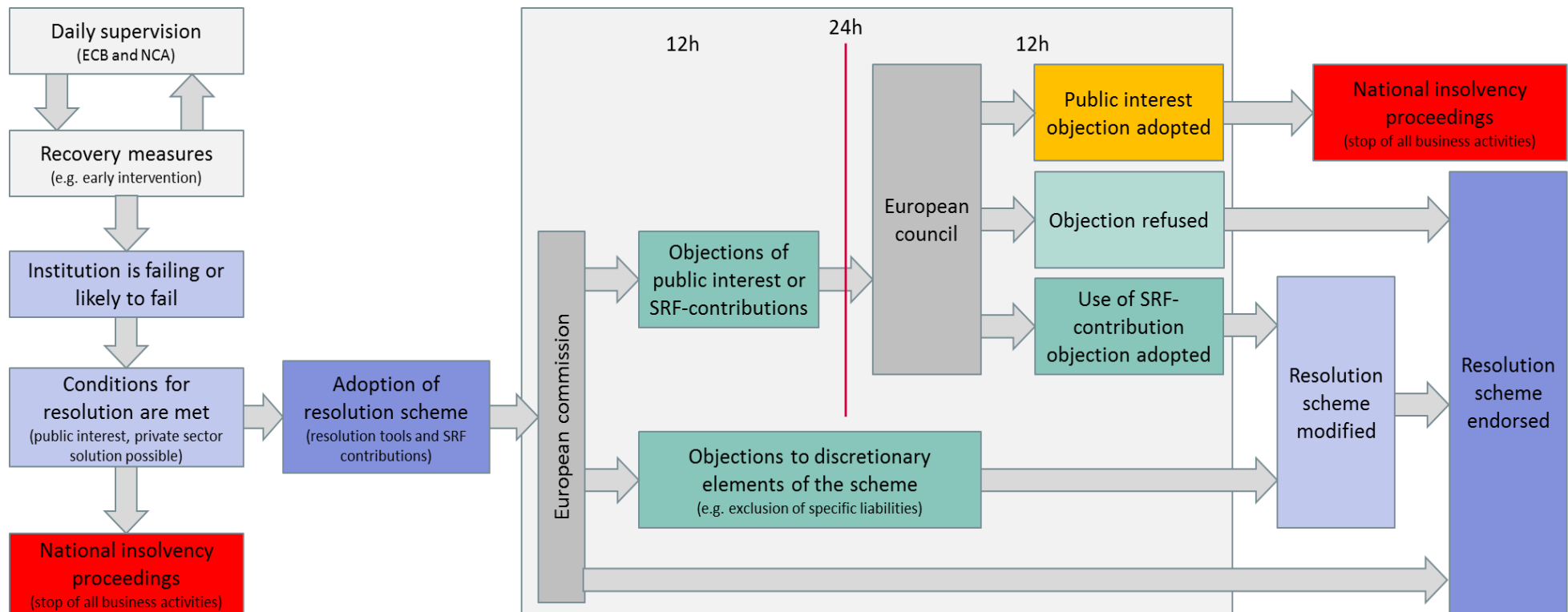
# Banking Supervisory: SREP flowchart (SREP=Supervisory Review and Evaluation Process)



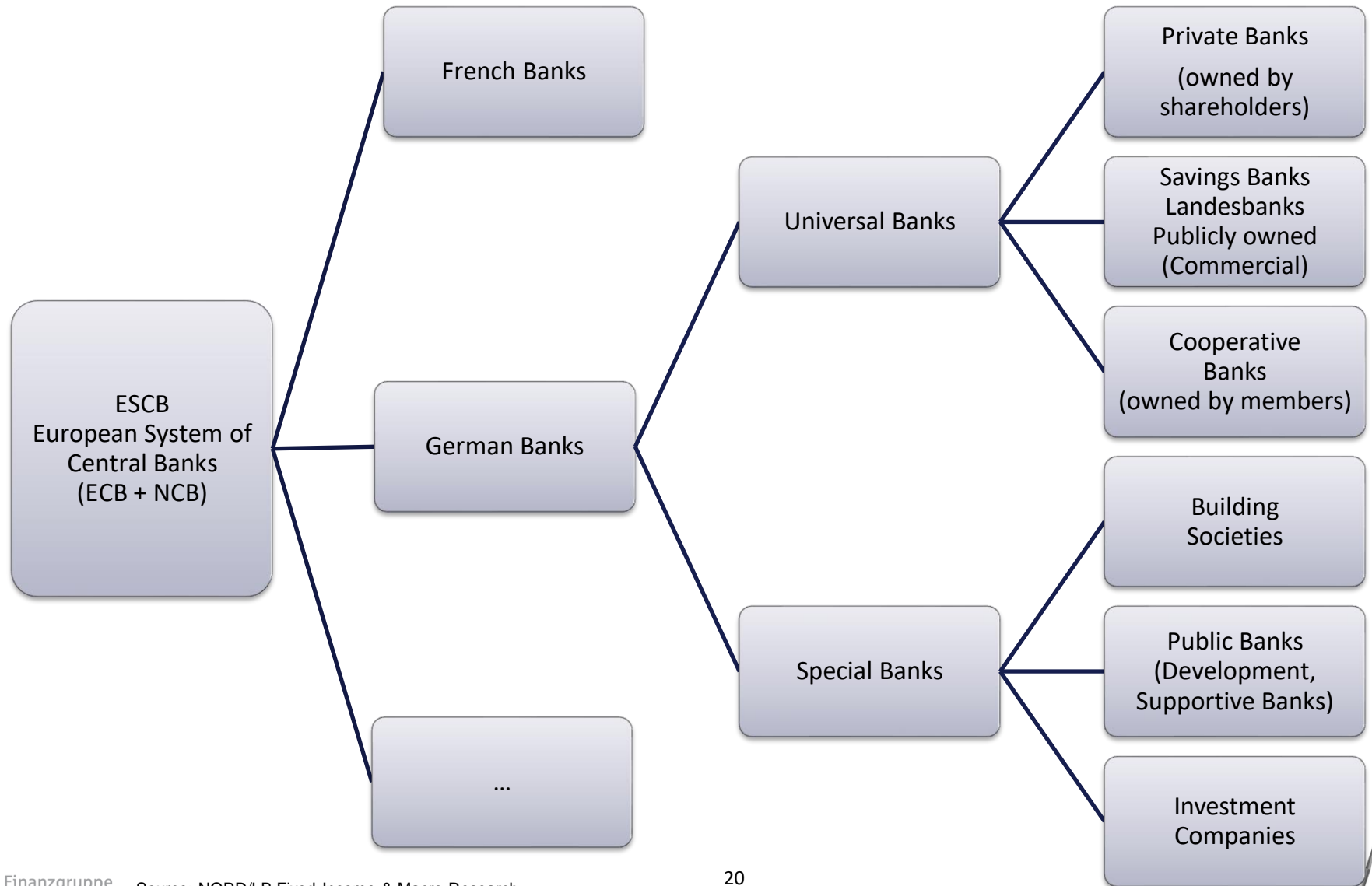
# Banking Supervisory: Bank resolution process



# Banking Supervisory: Banking supervision in the context of the SSM



# The structure of the German banking system



# The structure of the German banking system

## General structure

- The German banking system is dominated by universal banks
  - G-SIB
  - D-SIB
  - R-SIB
  - nonSIB
- It is characterized by a dense network of banks (overbanked?)
- 2015: 1.960 heads per bank office (EU-15 average: 2.077)
- The concentration process is still ongoing (but not as strong as in the US or other EUR countries).

## Mostly small banks

- 2018: 1.800 banks in Germany
- 2018: more than 50% of them are small or very small banks with business volumes of less than EUR 1bn

## Number of banks and branches in Germany

Year	Banks	Branches	Savings Banks	Cooperative Banks	Private Banks
1957	13.359	12.974	857	2.188	338
1967	10.859	26.285	862	2.187	329
1977	6.007	37.768	622	2.343	270
1987	4.552	39.917	586	3.480	314
1990	4.180	39.750	580	3.037	329
1990 <sup>+</sup>	4.719	44.345	772	3.410	350
1997	3.578	47.086	598	2.420	326
2007	2.277	39.833	446	1.232	260
2010	2.093	38.183	429	1.138	280
2015	1.960	34.045	414	1.023	271
2016	1.888	32.026	408	976	263
2017	1.823	30.126	391	917	263
2018			386	875	267

<sup>+</sup> Unified Germany; Source: Deutsche Bundesbank

# The structure of the German banking system

Figure 3: Business aims of banks

	Major Banks	Savings Banks	Cooperative Banks
Owners	Shareholders	Municipalities	Members
Aim	Profit Maximization	Profit Optimization + Promotion of region	Profit Optimization + Promotion of members

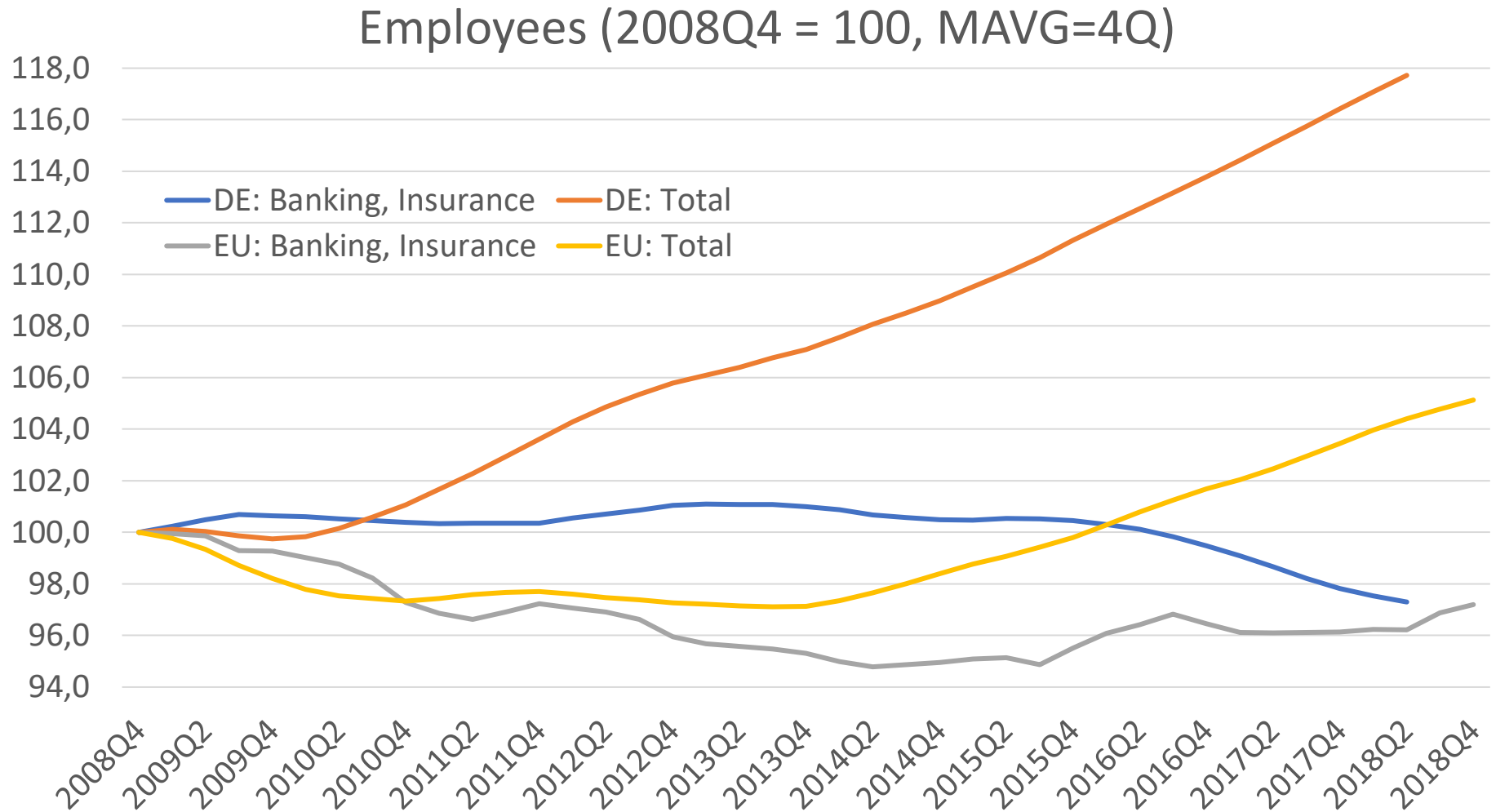
Source: Rudolf Faltermeier, The German Banking System – Types of Banks and Experience in the Crisis

# The structure of the German banking system

(market share in %)	Total Assets			Loans to non-banks			Deposits/borrowing non-banks		
	2000	2014	2018	2000	2014	2018	2000	2014	2018
<b>Private Commercial Banks</b>	<b>28</b>	<b>39</b>	<b>40</b>	<b>26</b>	<b>28</b>	<b>32</b>	<b>26</b>	<b>36</b>	<b>40</b>
Big banks	16	25	23	15	12	14	14	15	20
Regional banks and others	10	11	12	10	15	14	12	17	16
Branches of foreign banks	2	3	5	1	2	2	0	4	4
<b>Savings banks group</b>	<b>35</b>	<b>28</b>	<b>26</b>	<b>35</b>	<b>36</b>	<b>34</b>	<b>39</b>	<b>34</b>	<b>32</b>
Savings banks	16	14	17	19	22	24	26	25	26
Landesbanks	20	14	10	16	14	9	13	9	6
<b>Cooperative Banks group</b>	<b>12</b>	<b>14</b>	<b>12</b>	<b>12</b>	<b>16</b>	<b>17</b>	<b>18</b>	<b>18</b>	<b>18</b>
Other banks	25	19	22	27	20	17	17	12	9
All banks (in bn EUR)	6.148	7.853	7.824	3.479	3.901	4.156	2.261	3.339	3.769

Source: Deutsche Bundesbank

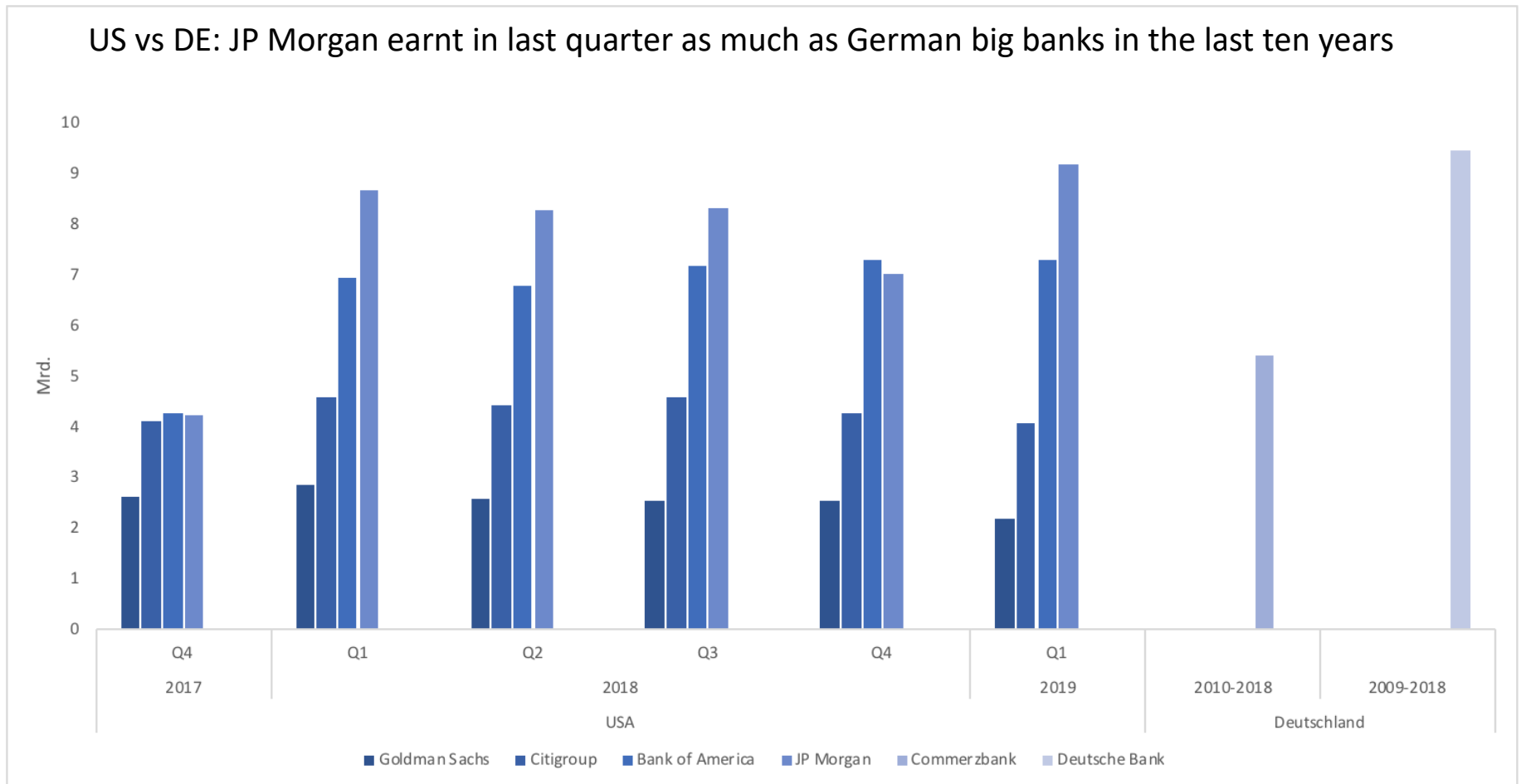
## The structure of the German banking system



Source: Stat. BA, Eurostat



# The structure of the German banking system



Source: <https://www.godmode-trader.de/artikel/die-banken-in-deutschland-geben-ein-trauriges-bild-ab,7269913>

# Banks perspectives – chances and risks

## Challenges for the banking sector

---

- Technology (Digitisation)
- Disintermediation (direct finance via Internet platforms, ...)
- New Player (FinTechs)
- Regulation (higher costs)
- Germany: low profitability
  - No general recapitalisation (like US, UK, FR, ...; but with the result of bigger banks today)
  - Lack of strong sector policy
  - Overbanked (?)
  - German corporate sector is net saver (= no need for net lending)

# Agenda

## **Introduction: NORD/LB at a glance**

Torsten Windels, Economist

## **The European/German Banking System**

Torsten Windels, Economist

## **Some thoughts about the new US trade policy**

Tobias Basse, NORD/LB Fixed Income & Macro Research

**“Varieties of Capitalism”** (2001, Peter A. Hall (US Political Scientist), David Soskice (British Economist))

Torsten Windels, Economist

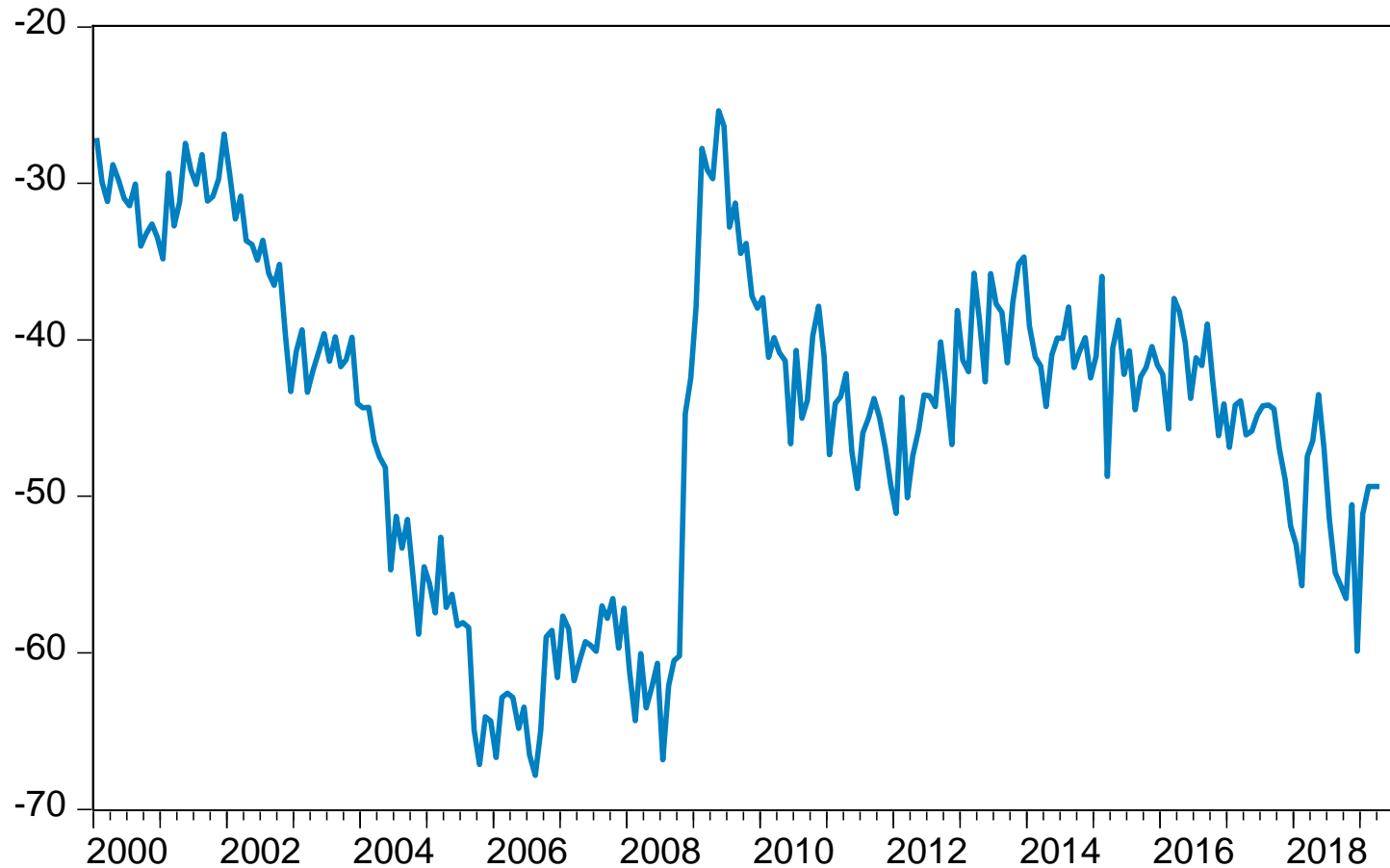
# Agenda



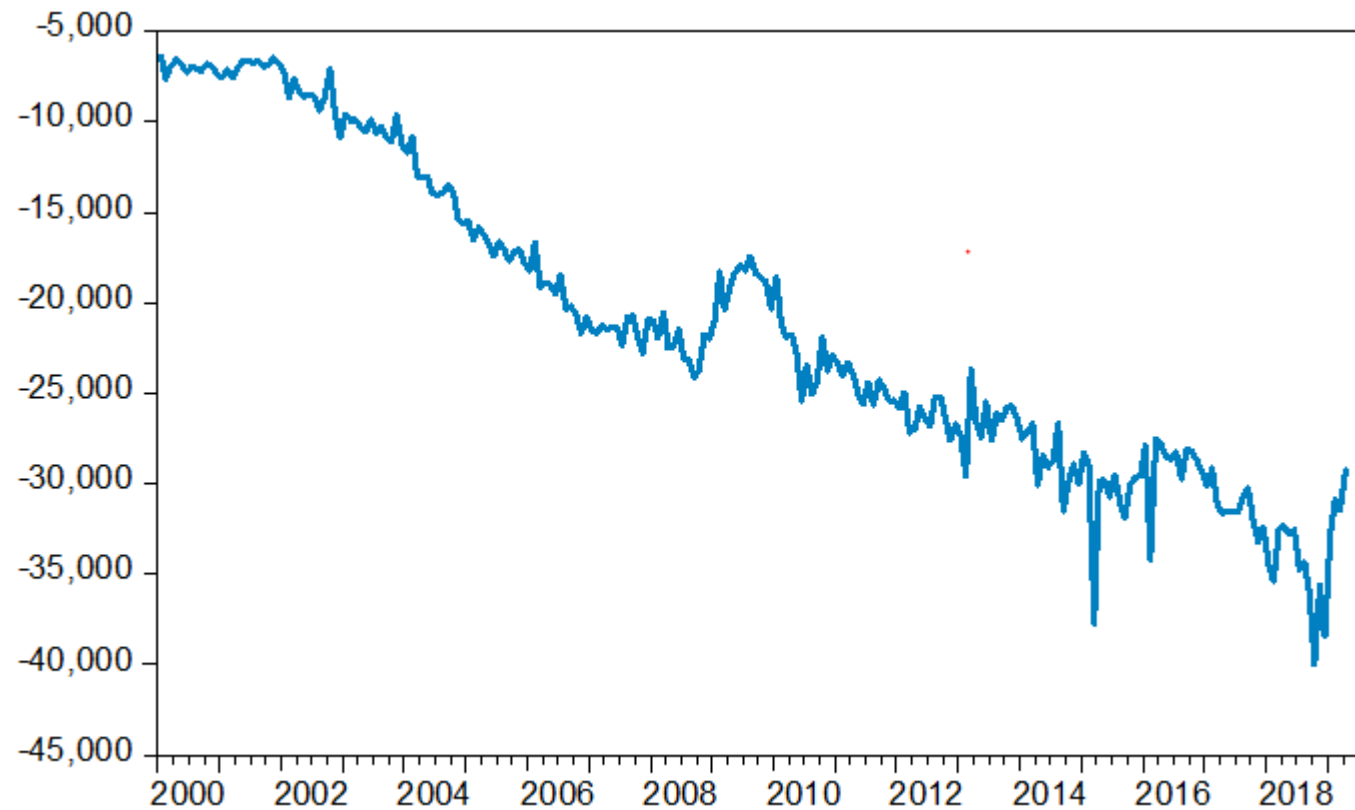
1. The US trade conflict with China

2. What happens next?

## The US trade balance deficit (in billion USD) – a problem for Donald Trump



## The bilateral foreign trade deficit with China (in million USD)



## More imports than exports – a problem for Donald Trump

- The US trade balance deficit is increasingly seen as a problem on Capitol Hill
- According to Donald Trump's reading, domestic jobs are lost through imports
- Bilateral imbalances in particular are interpreted as a major economic threat
- Especially China, Japan and Germany are therefore targets of Donald Trump's criticism

## The new US trade policy explained in one tweet



**Donald J. Trump**  @realDonaldTrump · May 6

The United States has been losing, for many years, 600 to 800 Billion Dollars a year on Trade. With China we lose 500 Billion Dollars. Sorry, we're not going to be doing that anymore!



16K



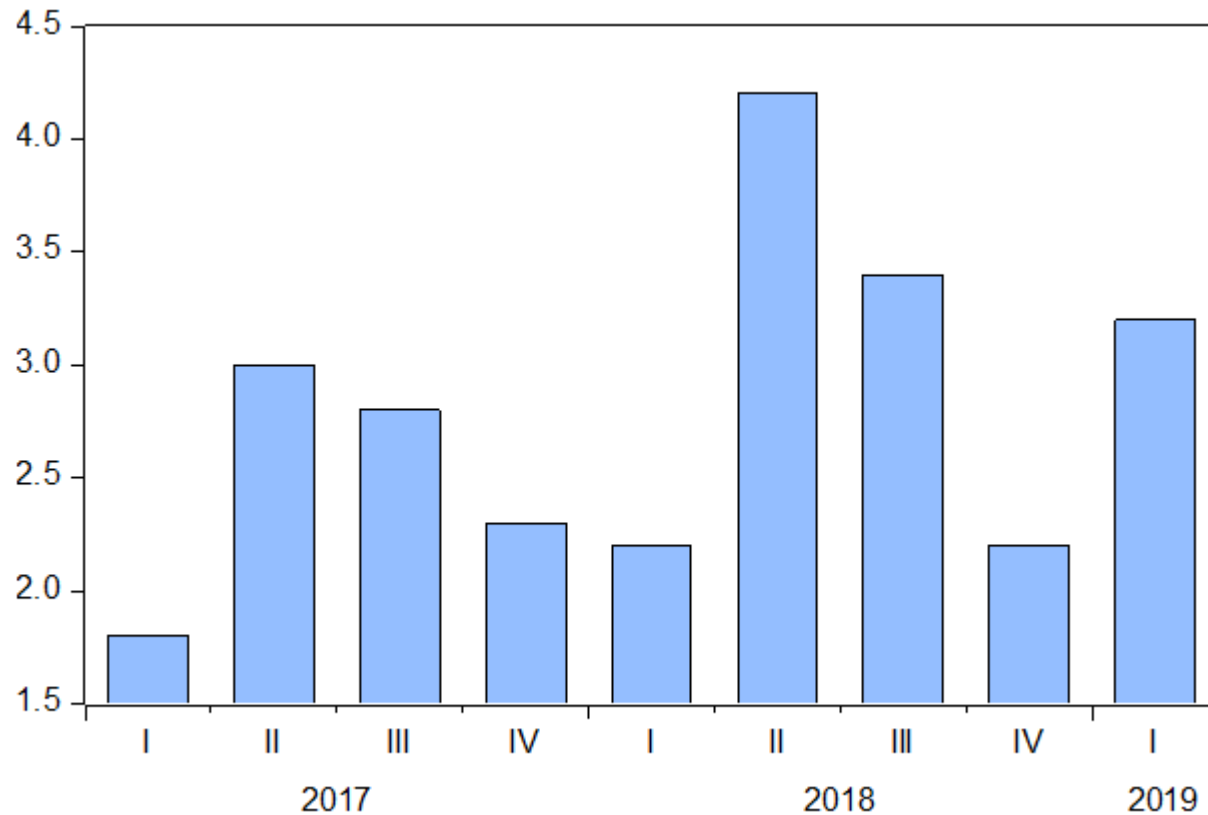
28K



121K



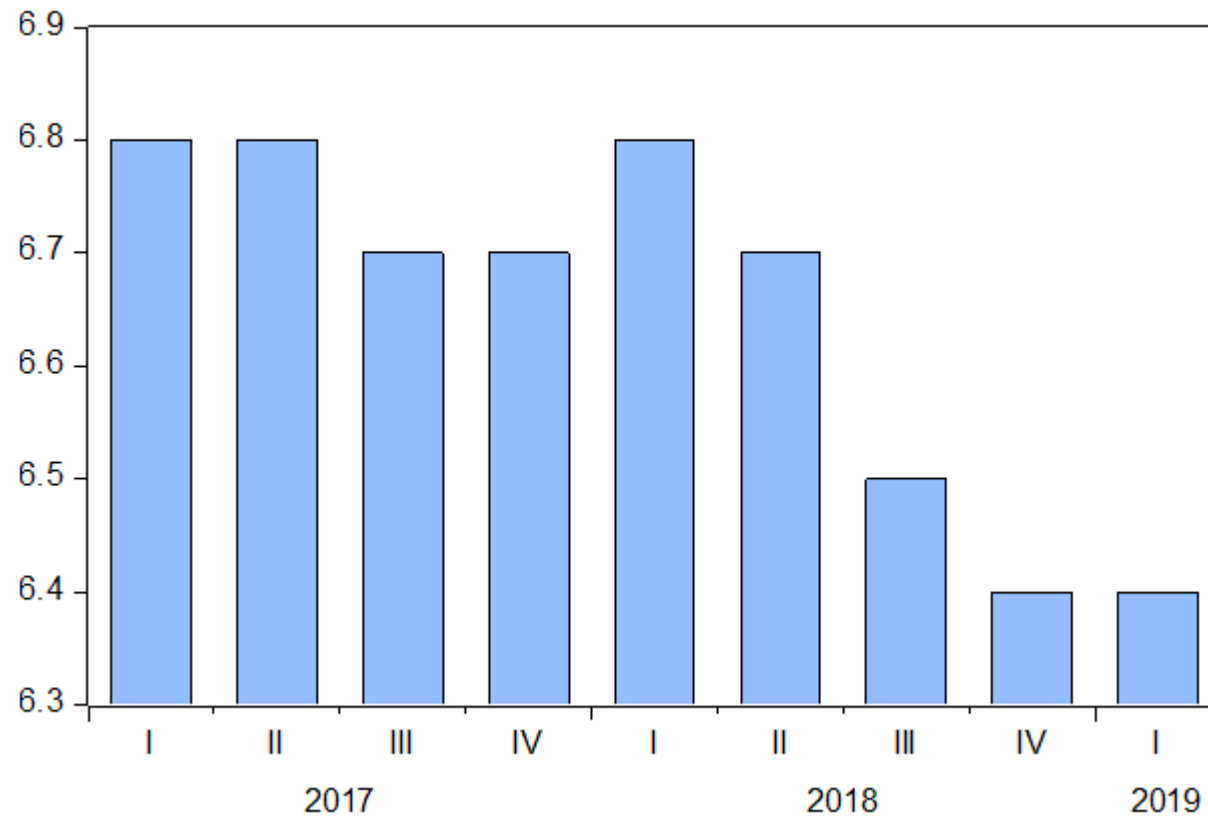
## A strong US economy: A little bit more than 3% real growth (SAAR) in Q1



## The US employment situation is still favourable

- US economic growth was pleasingly strong in Q1 2019
- The US consumer is still a solid pillar of the North American economy
- The sustained strength of the US economy also leaves its mark on the labor market
- According to preliminary figures, the US economy was able to create 263,000 additional jobs in April.
- The unemployment rate has dropped to only 3.6%
- Hourly earnings increased by 3.2% y/y in April
- The pleasing employment situation clearly is supporting consumer spending
- Feedback from companies also increasingly indicates a shortage of skilled workers
- The US economy will therefore no longer be able to create about 200,000 new jobs every month.

## Slower growth in China – „only“ +6.4% Y/Y in Q1 2019



## The economic situation in China is not that positive anymore

- Real output in China increased by 6.4% Y/Y in the Q1 2019
- Traders in financial markets had anticipated even weaker figures
- Growth in the Middle Kingdom is likely to weaken gradually
- This is exerting pressure on Beijing and could speak in favour of a settlement in the trade dispute
- But the leadership in China does not want to lose its face

## Donald Trump puts China under pressure in the trade dispute

- Donald Trump recently criticized the lack of progress in negotiations with Beijing
- In two tweets, the US president announced higher punitive tariffs
- In principle, there is already a lot of agreement on both sides
- Discussions seem to be faltering on some rather complicated questions of detail
- The Chinese subsidy policy is a problem
- Protection of intellectual property rights also remains in Washington's focus
- After pleasing US economic data, Donald Trump believes to be in a better position
- He sees himself in a position of strength and wants to bring about regulations that are advantageous for the USA
- The risk of the talks failing has now increased again
- Washington and Beijing, however, are likely to continue to be interested in a deal

## Two tweets that can make a difference



# Agenda

1. The US trade conflict with China

2. What happens next?

## Peking and Washington still are interested in a compromise

- Deputy Prime Minister Liu He led the Chinese delegation on its trip to Washington
- Peking hat mittlerweile auf die US-Zölle geantwortet
- The threats by Donald Trumps are primarily to be seen as a more aggressive US negotiation strategy
- Washington wants "the deal" - but only on sufficiently attractive terms
- The risk of a failure of the talks has certainly increased recently (Huawei...)
- All Western nations could benefit from US measures to level the playing field with China
- This would in particular be true if Beijing were to improve the way property rights are handled in China
- An agreement in principle on remains possible
- The G-20 summit in Japan could be the place where a deal is going to be made
- The problems are complex - perhaps "only" a ceasefire will initially be reached here



## Washingtons new trade policy – what about Tokyo and Brussels?

- After the "deal" with China there should be further trade disputes with Japan and the EU
- Controversial negotiations have to be expected in both cases
- Nevertheless, agreements with Tokyo and Brussels are possible - not to say even probable
- Japan will be quicker to find a compromise with the US
- Mexico is now also moving back into the focus of Donald Trump
- His new trade policy is used to force the US southern neighbor to block illegal immigration
- This could be a major problem for USMCA

## More Tweets: Japan ...



**Donald J. Trump**  @realDonaldTrump · 6. Mai

Just spoke to Prime Minister Abe of Japan concerning North Korea and Trade.  
Very good conversation!

## ... & Mexico



**Donald J. Trump**  @realDonaldTrump · 11 Std.



On June 10th, the United States will impose a 5% Tariff on all goods coming into our Country from Mexico, until such time as illegal migrants coming through Mexico, and into our Country, STOP. The Tariff will gradually increase until the Illegal Immigration problem is remedied,..



**Donald J. Trump**  @realDonaldTrump · 11 Std.



....at which time the Tariffs will be removed. Details from the White House to follow.

# Agenda

## **Introduction: NORD/LB at a glance**

Torsten Windels, Economist

## **The European/German Banking System**

Torsten Windels, Economist

## **Some thoughts about the new US trade policy**

Tobias Basse, NORD/LB Fixed Income & Macro Research

**“Varieties of Capitalism”** (2001, Peter A. Hall (US Political Scientist), David Soskice (British Economist))

Torsten Windels, Economist

## Financial, economic or/and political crisis

- Economy as a social system is much more complicated than the economic textbooks suggest
- Good analysis starts with the right question! But what is the right question?
- Trump is an expression of the problem, not the problem! But what is the problem?
- **Our analysis, our questions and the resulting answers could be too simple:**

*“We are currently experiencing the ‘birth pangs’ of a literally new world that functions differently and has a different basic order than the old one. The democratic systems are already strained to the breaking point. This is less due to the political actors than to the braking effect of the sometimes monstrous systems. What so far has been seen almost exclusively as a crisis of the global financial system is rather a progressive paralysis of the organizational system of societies. Their structures and leadership are increasingly overwhelmed by the complexity and speed of global change.”*

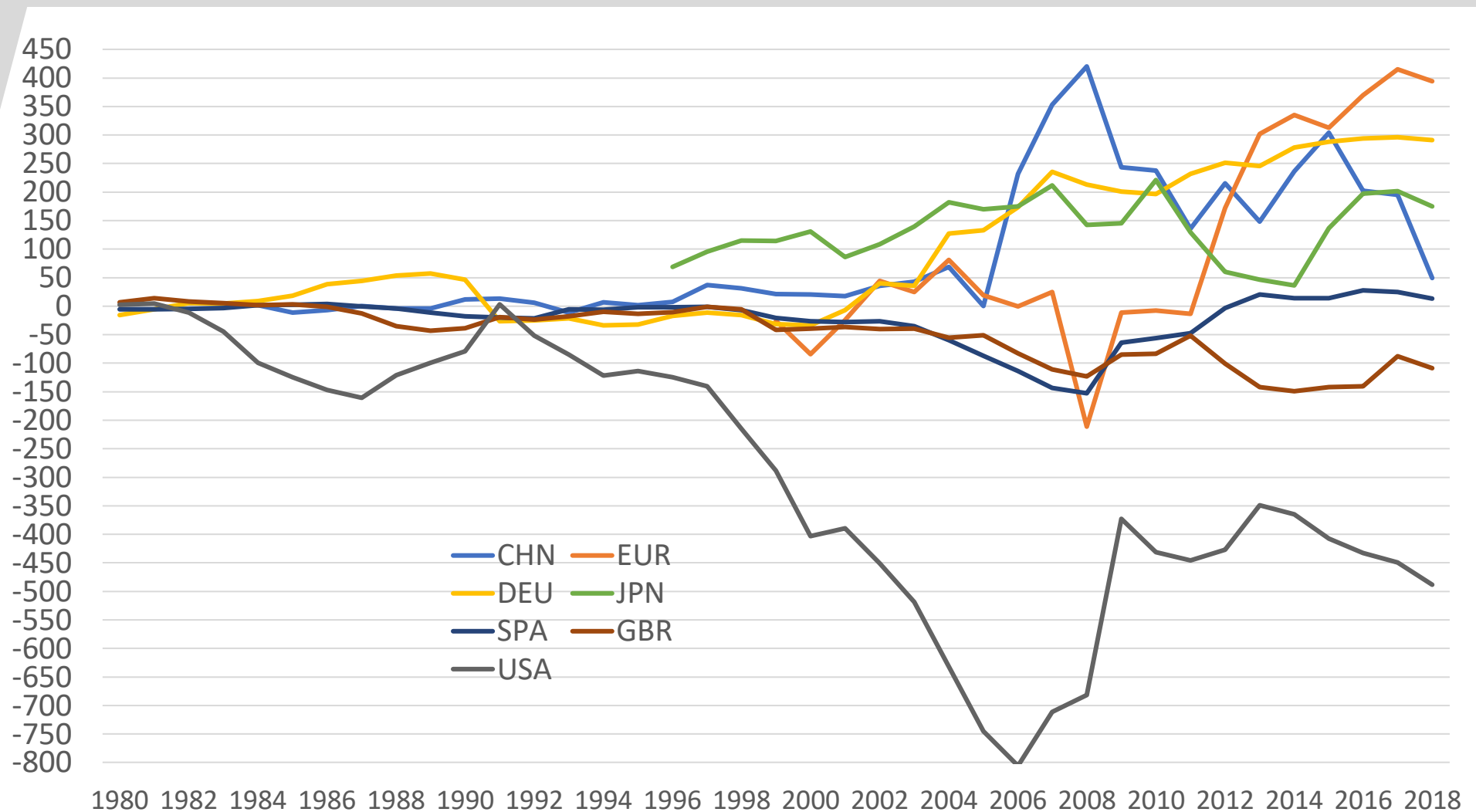
**Fredmund M. Malik** (\*1944, swiss strategy advisor), Auf ins Ungewisse, Die Zeit, 15.05.2014, S. 26 (translated with [www.DeepL.com](http://www.DeepL.com))

„Wir erleben derzeit wieder die »Geburtswehen« einer buchstäblich neuen Welt, die anders funktioniert und eine andere Grundordnung hat als die alte. Die demokratischen Systeme sind schon bis an die Zerreißgrenze strapaziert. Das liegt weniger an den politischen Akteuren als an der Bremswirkung der teils monströsen Systeme. Was bisher fast ausschließlich als Krise des globalen Finanzsystems gesehen wird, ist eher eine fortschreitende Lähmung des Organisationssystems der Gesellschaften. Ihre Strukturen und ihre Führung sind von der Komplexität und Geschwindigkeit des globalen Wandels immer deutlicher überfordert.“

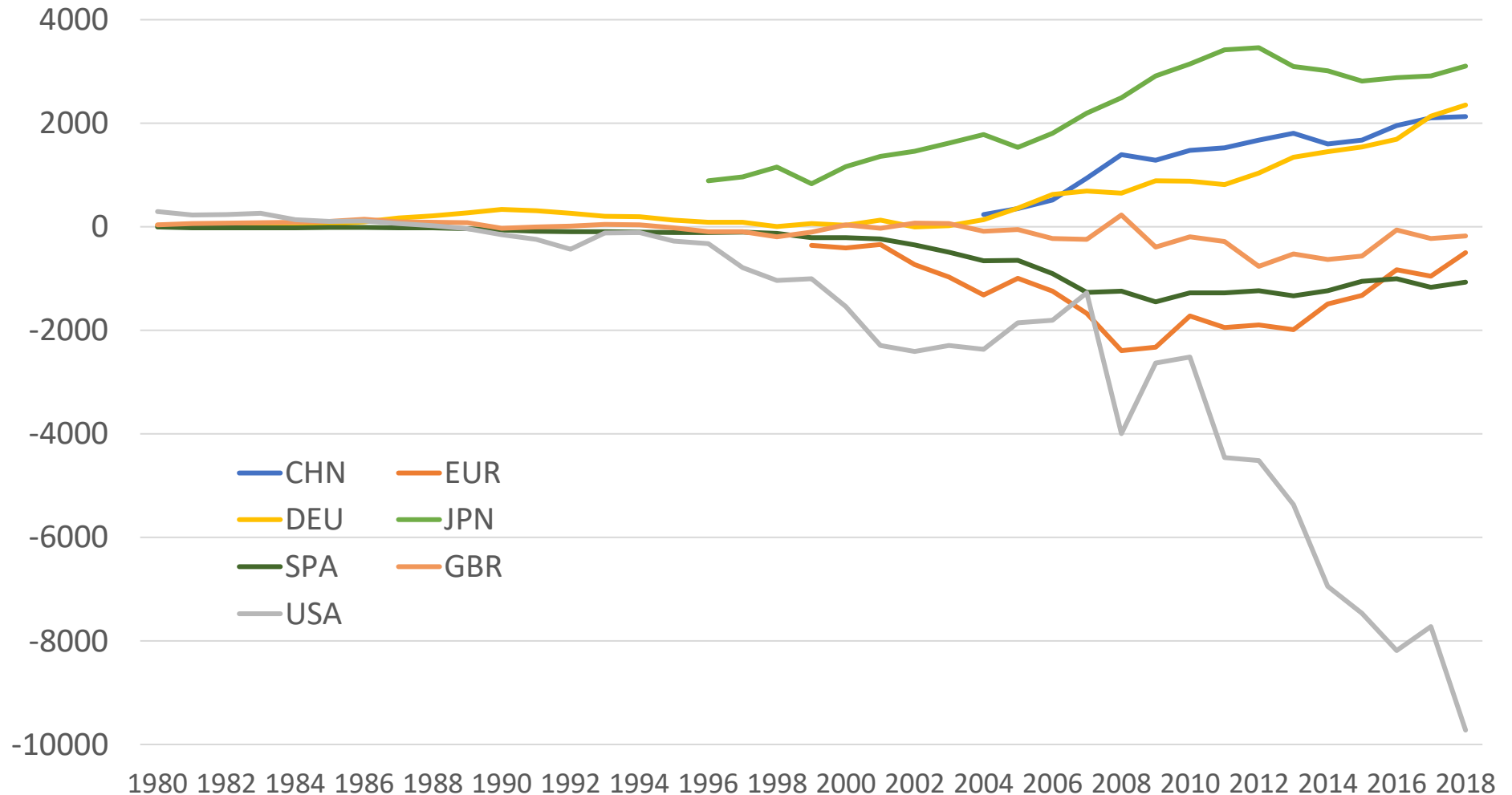
*“I think that most capitalists don’t know how to divide the economic pie well and most socialists don’t know how to grow it well, yet we are now at a juncture in which either  
a) people of different ideological inclinations will work together to skillfully reengineer the system so that the pie is both divided and grown well or  
b) we will have great conflict and some form of revolution that will hurt most everyone and will shrink the pie.”*

**Ray Dalio** (\*1949, US Hedge Fund Manager), Why and How Capitalism Needs to Be Reformed, published on LinkedIn, 20190404)

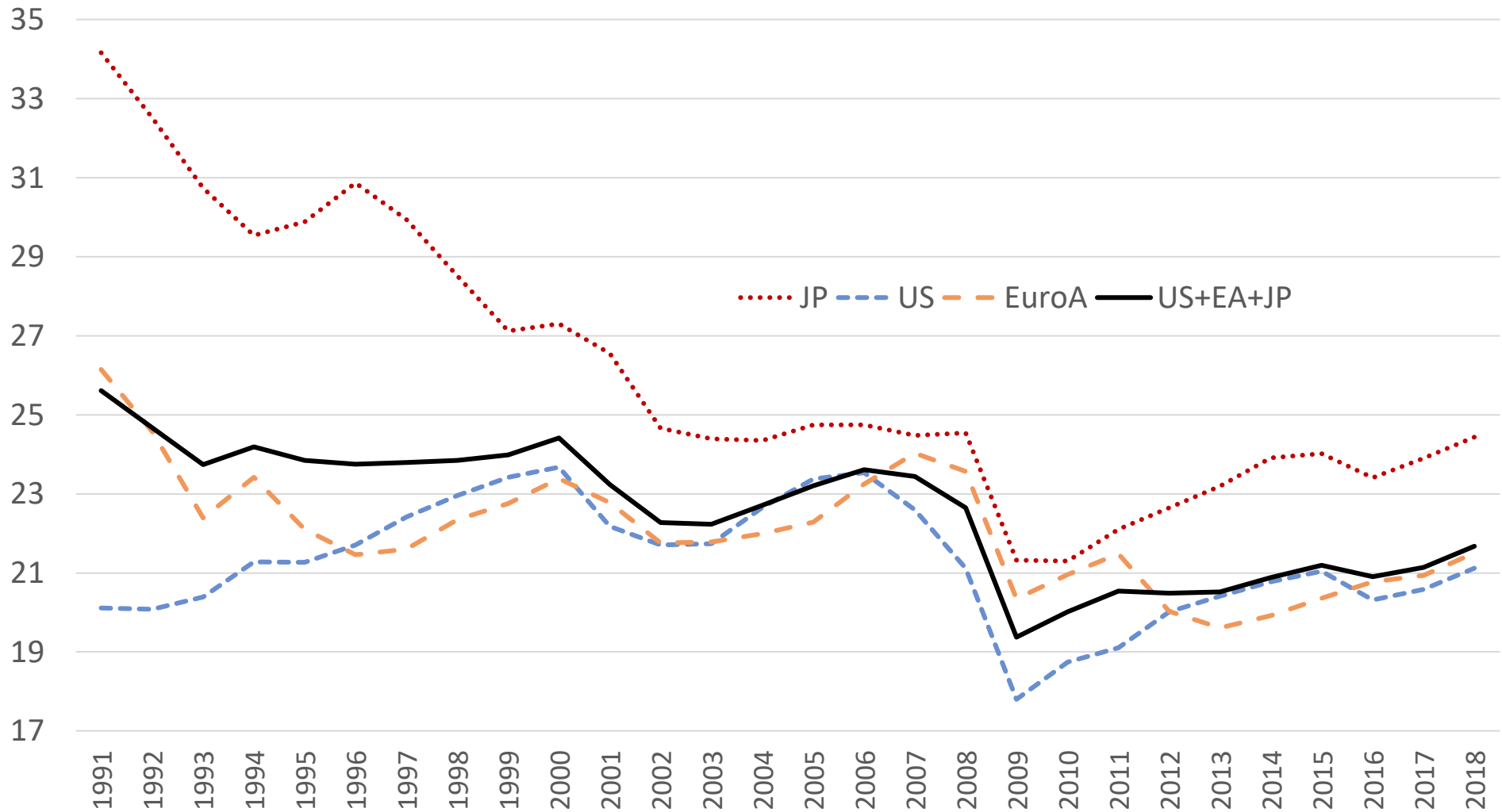
## No trace of equilibrium – Current Account Deficits (in bn USD, Source: IWF)



## No trace of equilibrium – Net Investment Position (in bn USD, Source: IWF)

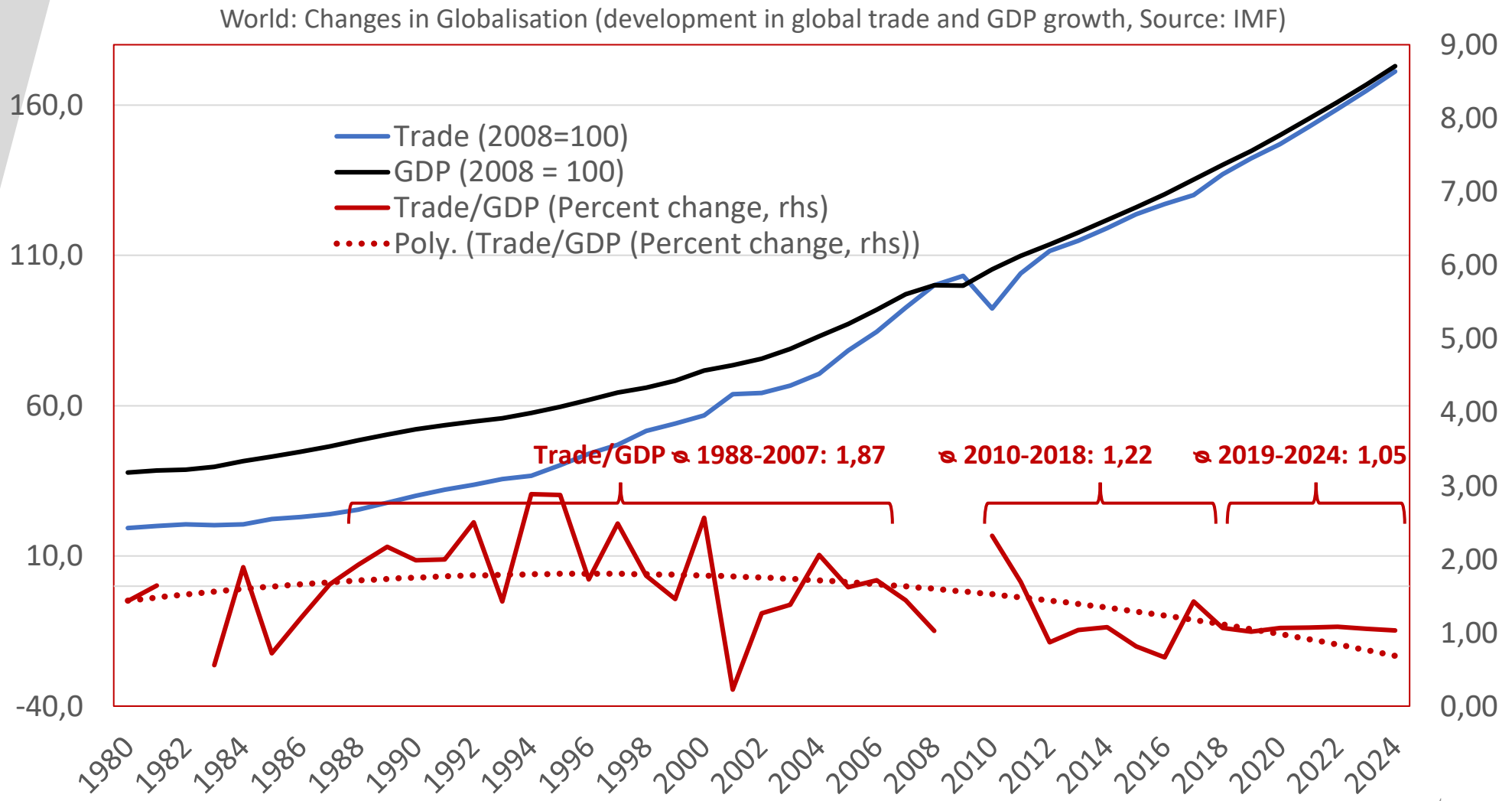


## Weak investments international (gross fixed capital formation, as a % of GDP, Source: IMF)

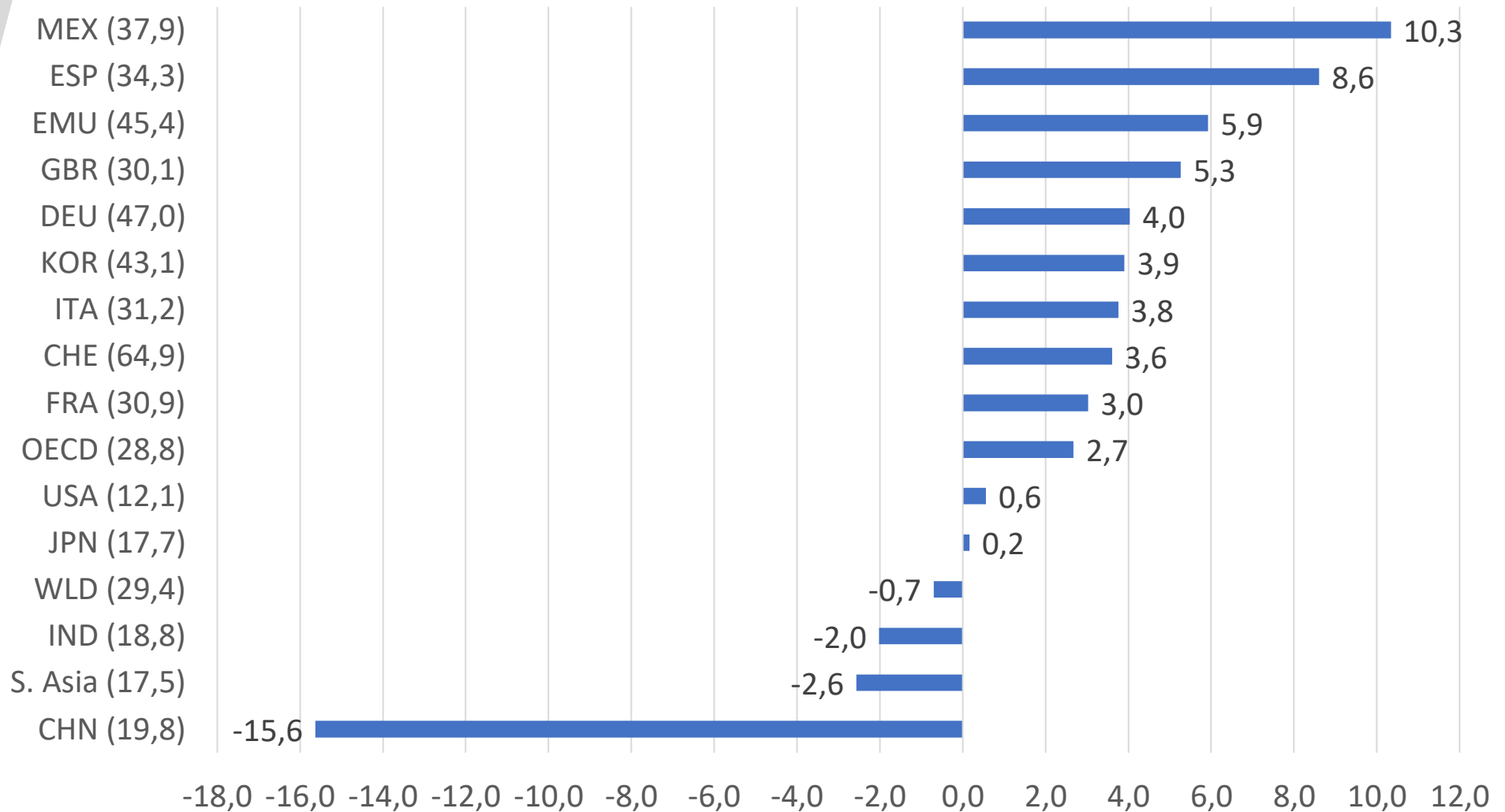




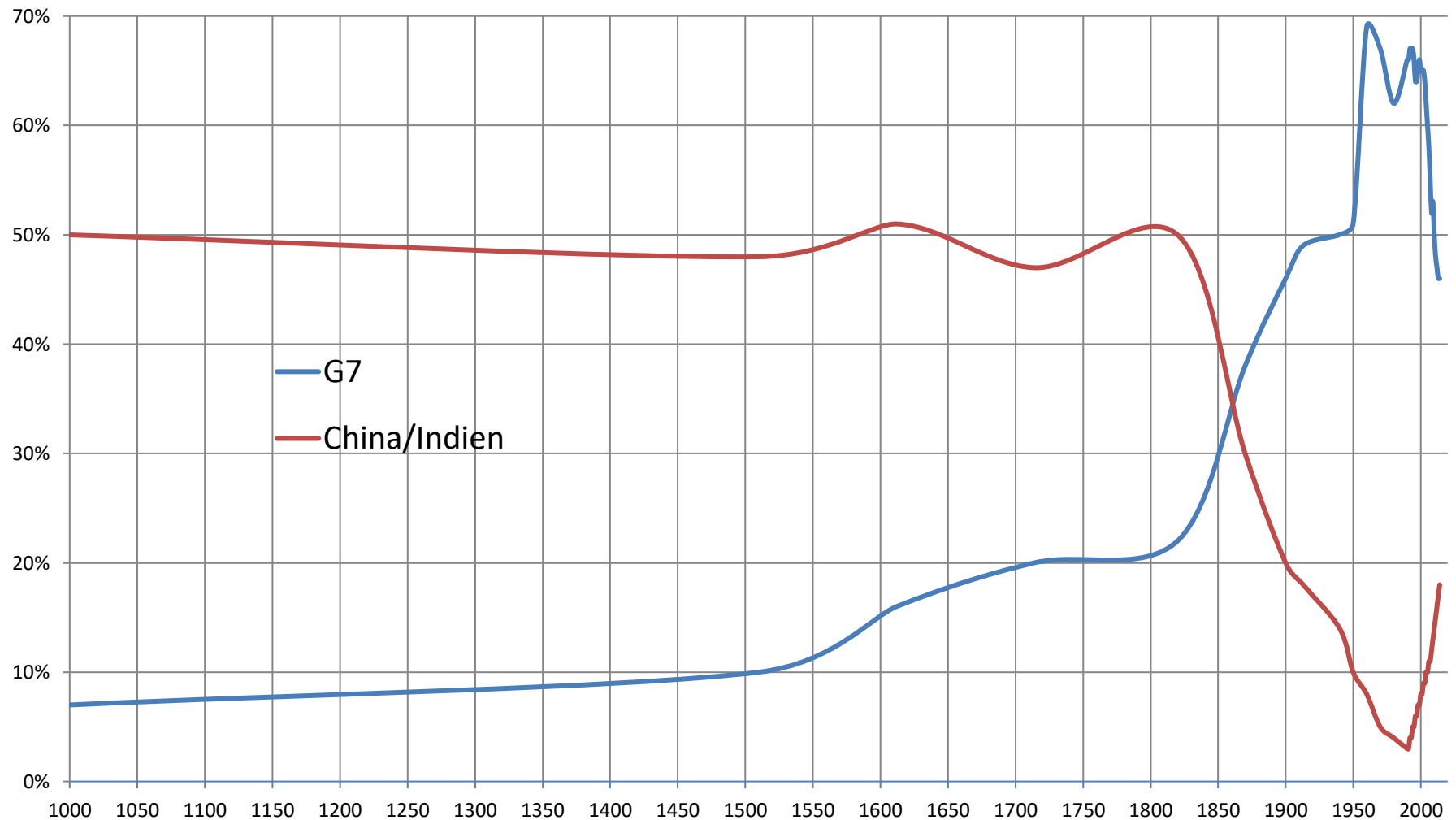
## Globalisation: structural change?



## Globalisation: Structural Change? – Export ratios 2017 vs. 2007 (differences in percentage points, in brackets: exports as a % of GDP)

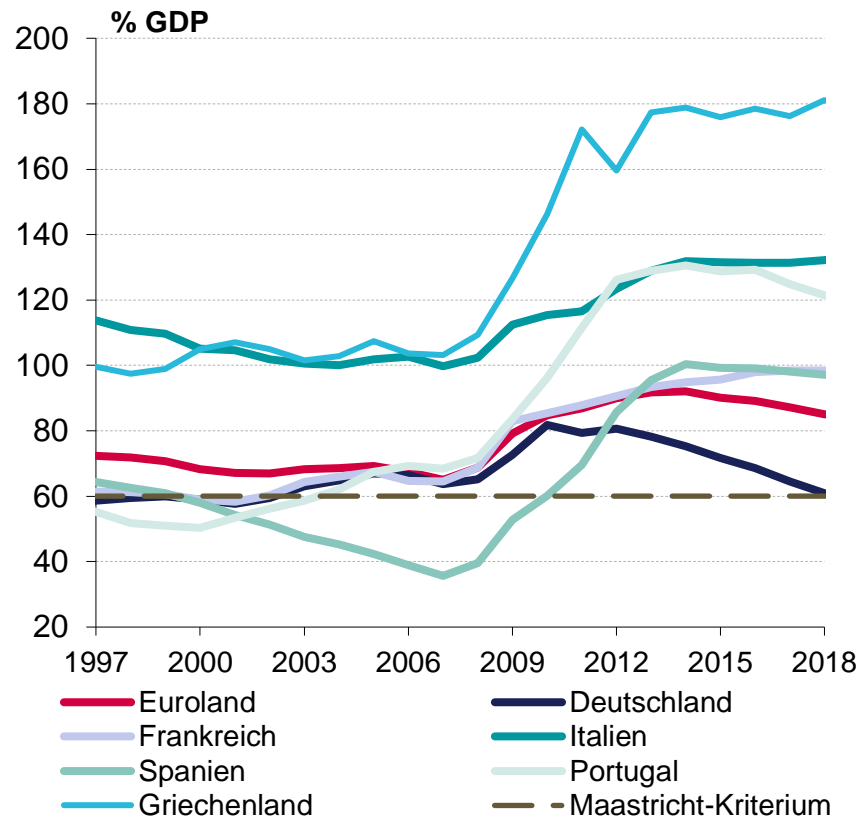


## Globalisation: structural change? – Shares in World GDP (%)

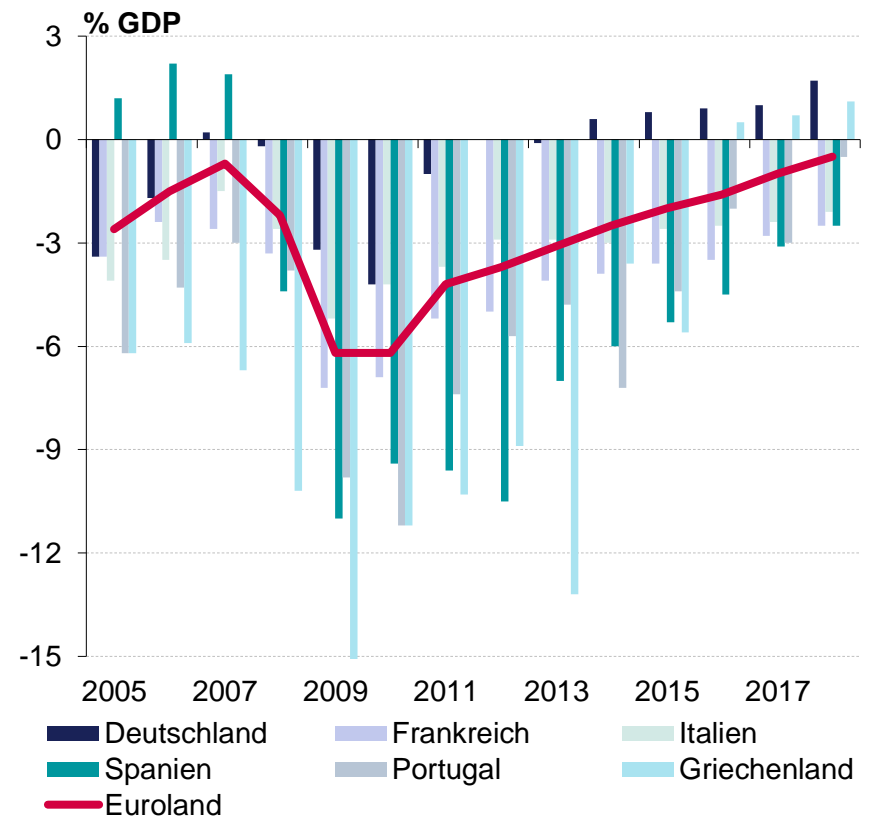


## Euroland: Uneven reduction in public debt, Germany as an exception

**Public debt (as a percentage of GDP)**

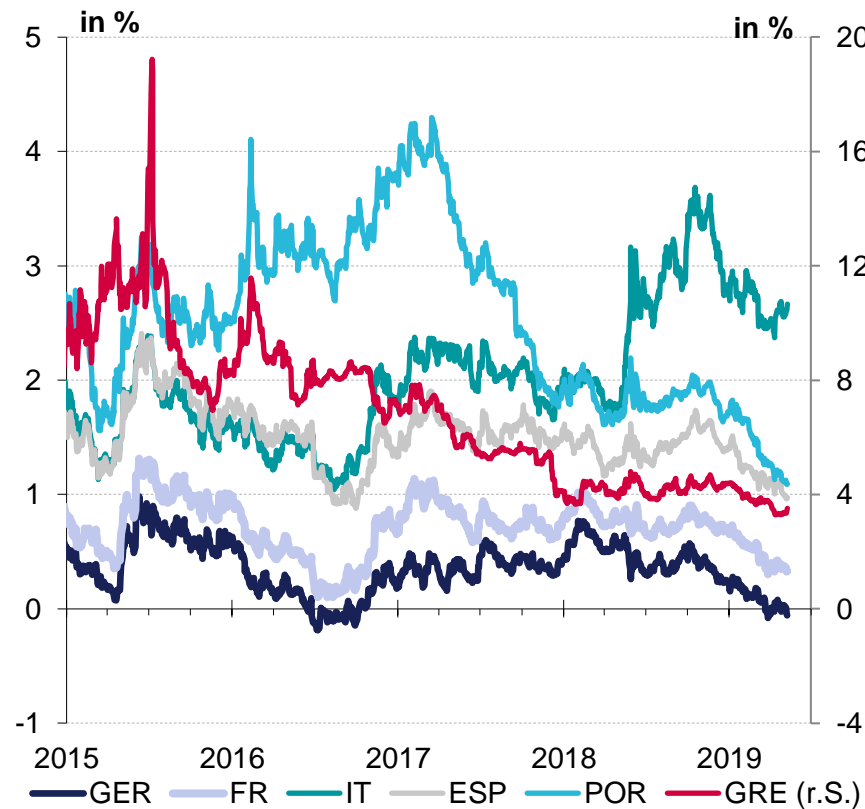


**Annual public deficit (as a percentage of GDP)**

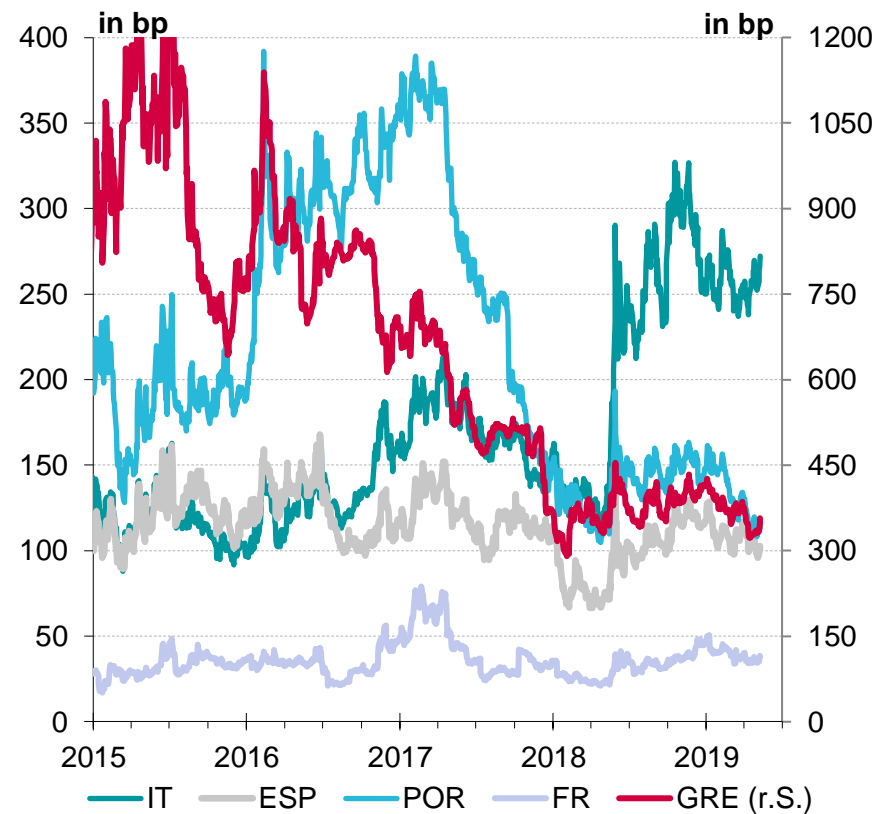


Government Bond Yields: Italy in focus but no contagion risk; Global political risks (trade wars, military conflicts (Ukraine, Iran, ...)) depress the interest rate level

Government bonds (10Y) Eurozone

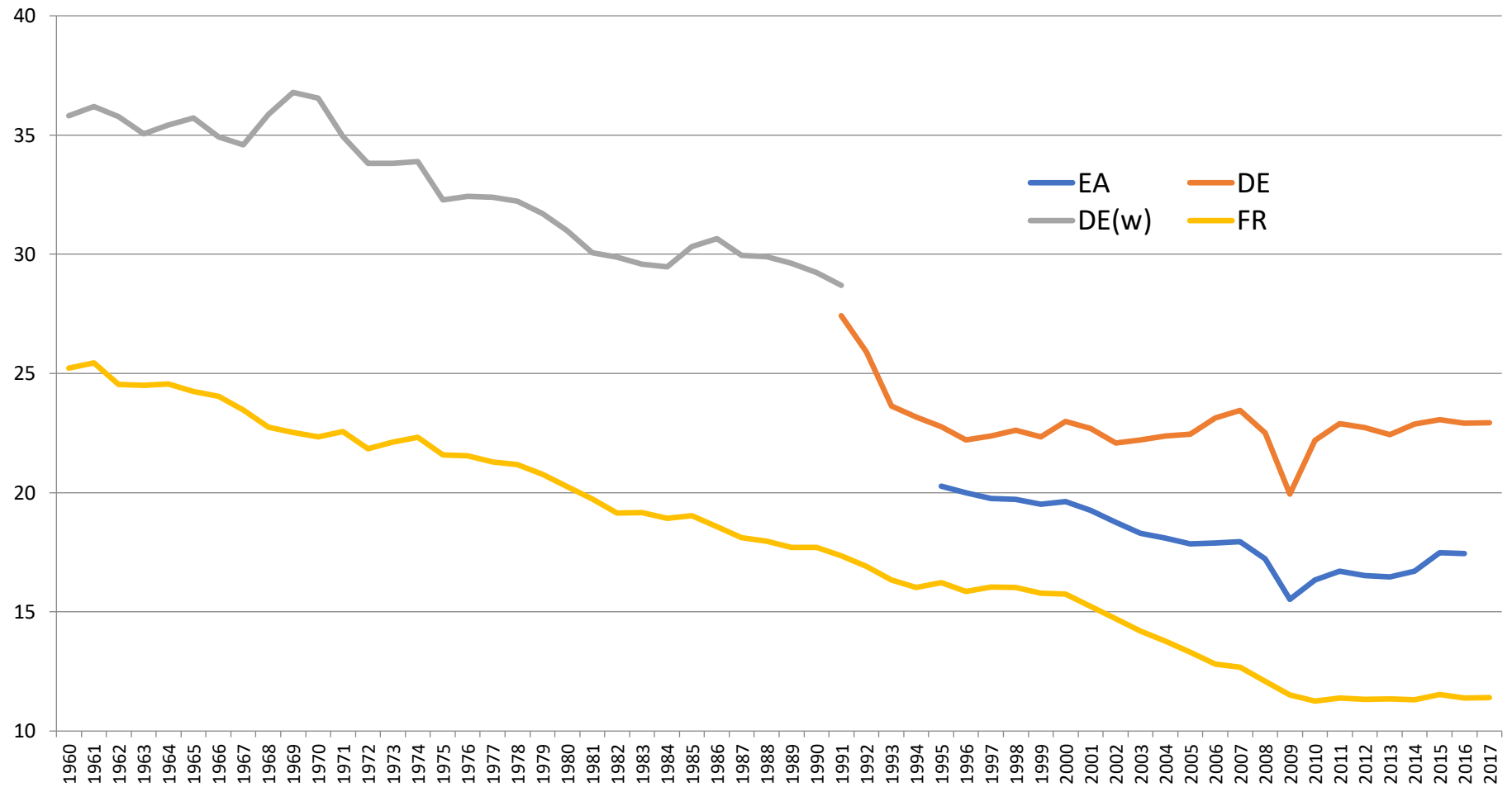


Spreads to German Bunds (10Y)



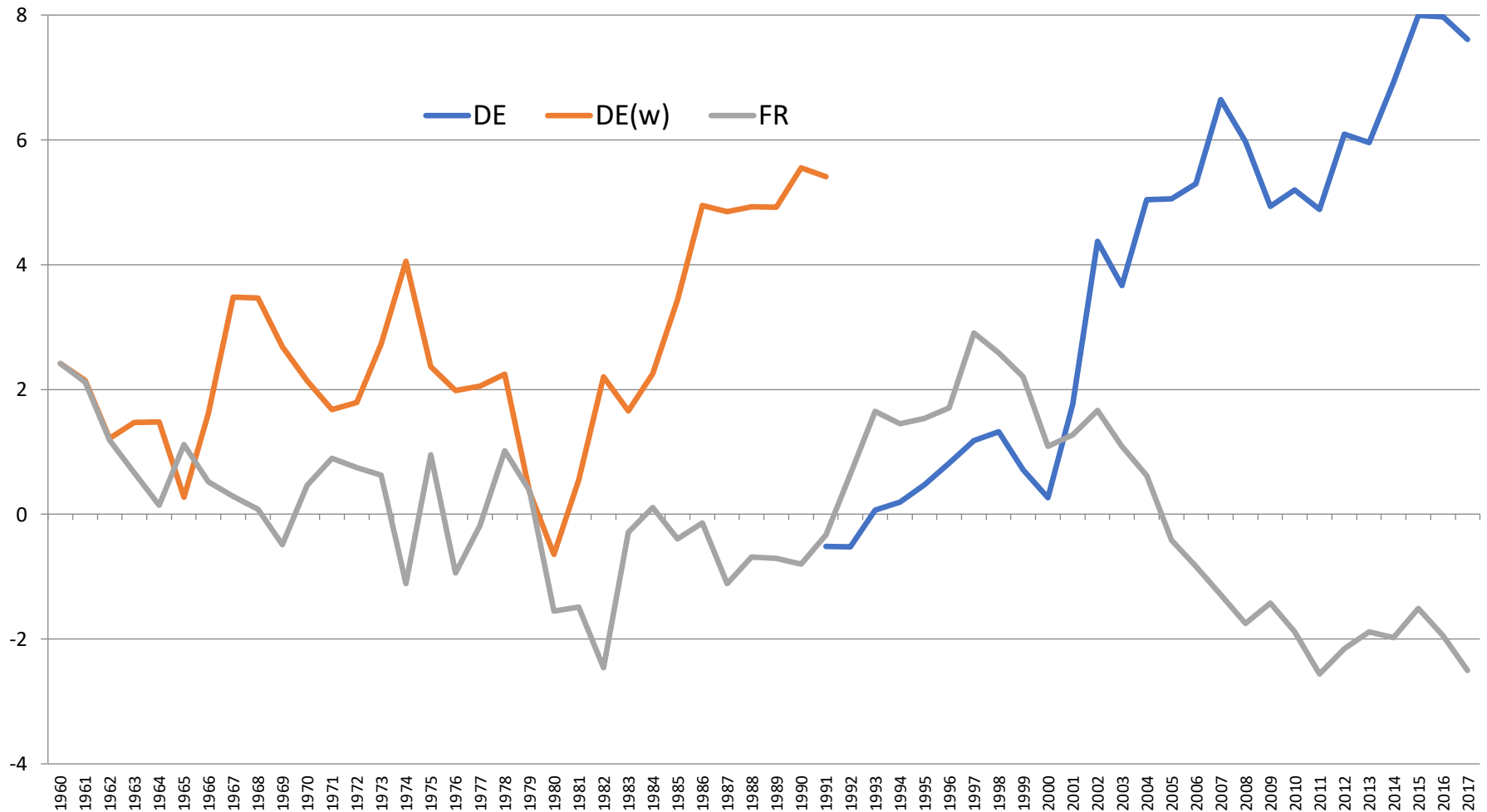
## Comparison of growth models in Germany and France

**Manufacturing Industry (Share of total gross value added in %)**



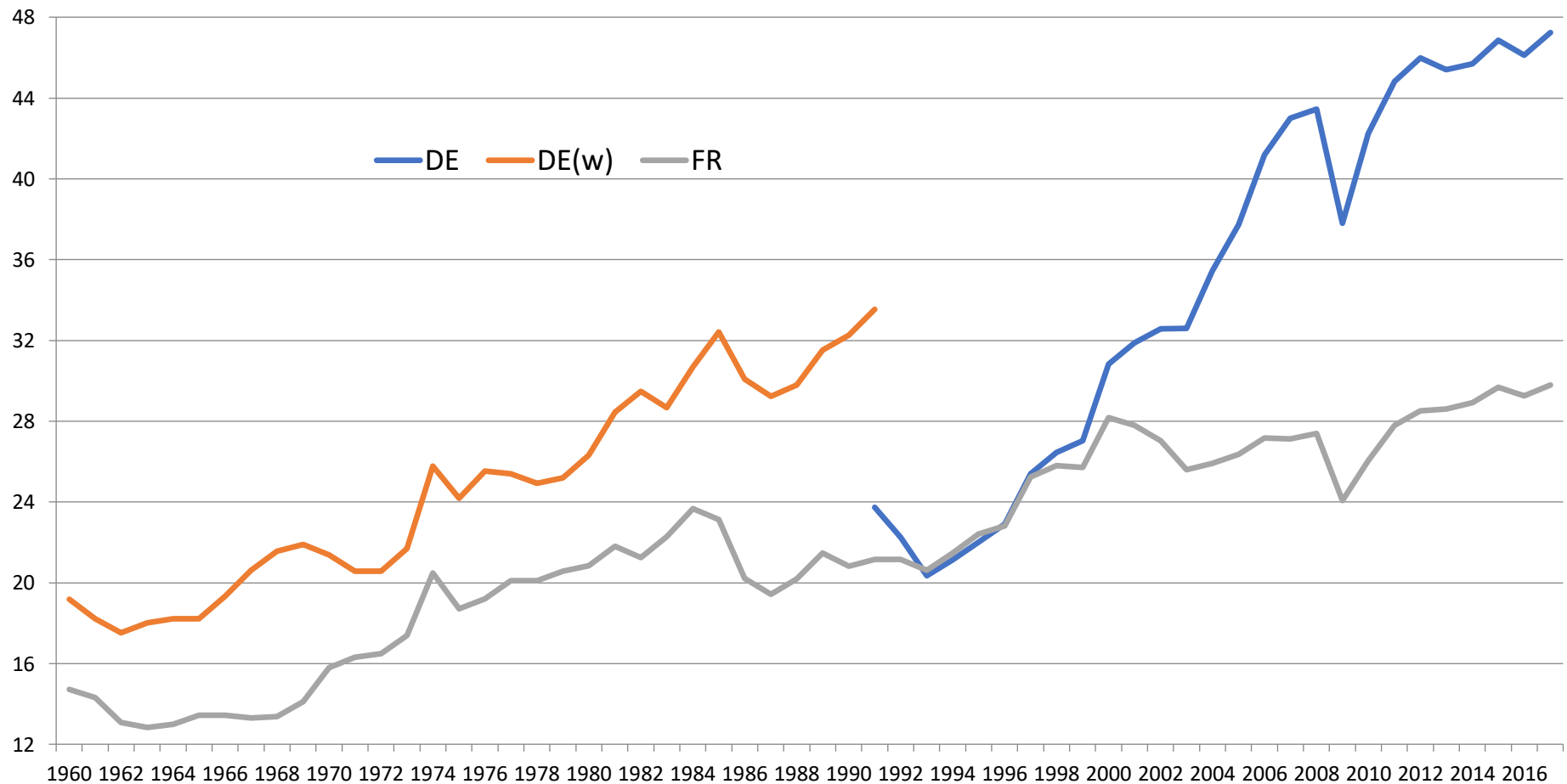
## Comparison of growth models in Germany and France

**Current Account (as a percentage of GDP)**



## Comparison of growth models in Germany and France

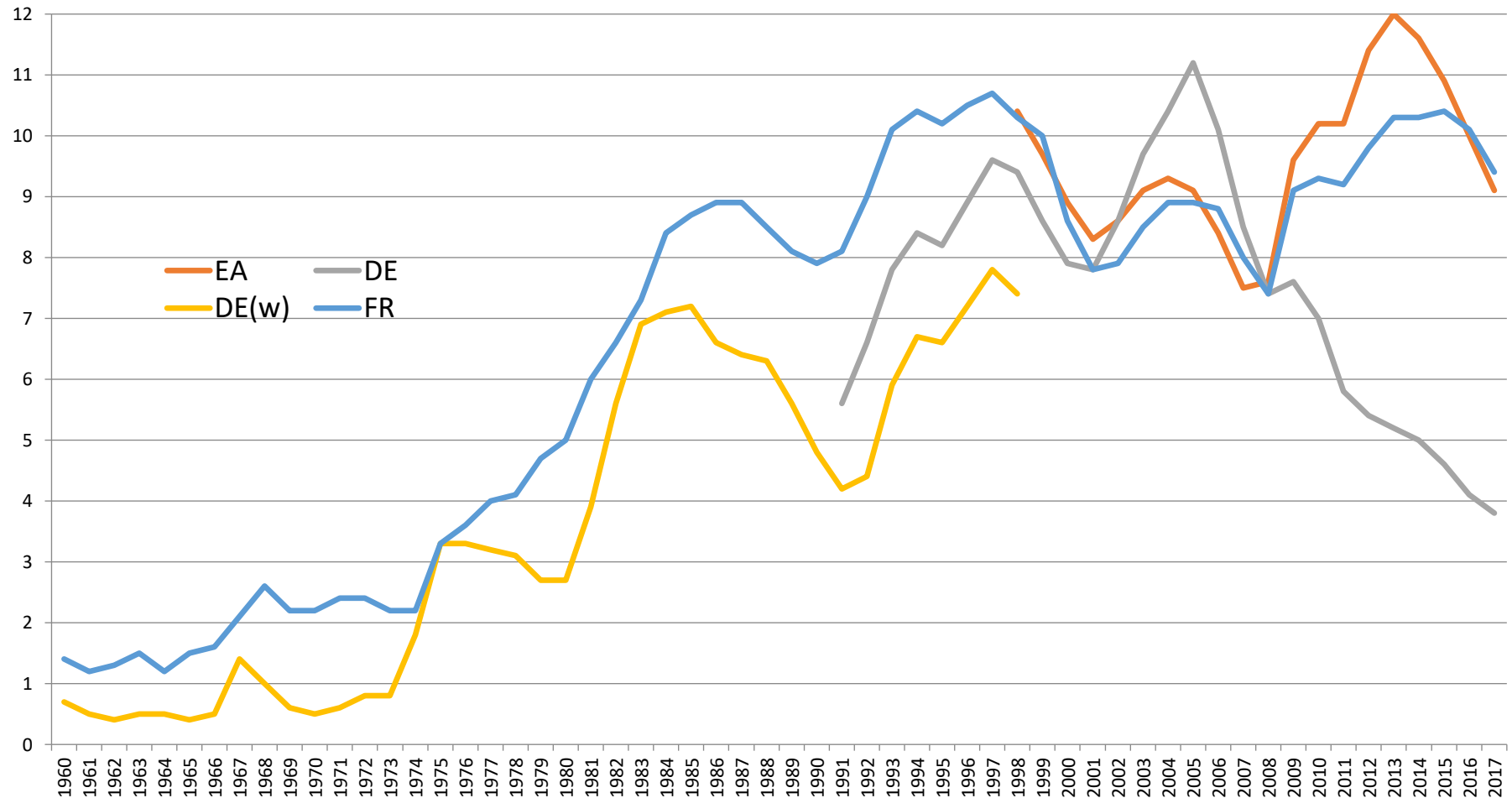
### Export ratios (Exports of goods and services, as a percentage of GDP, nominal)



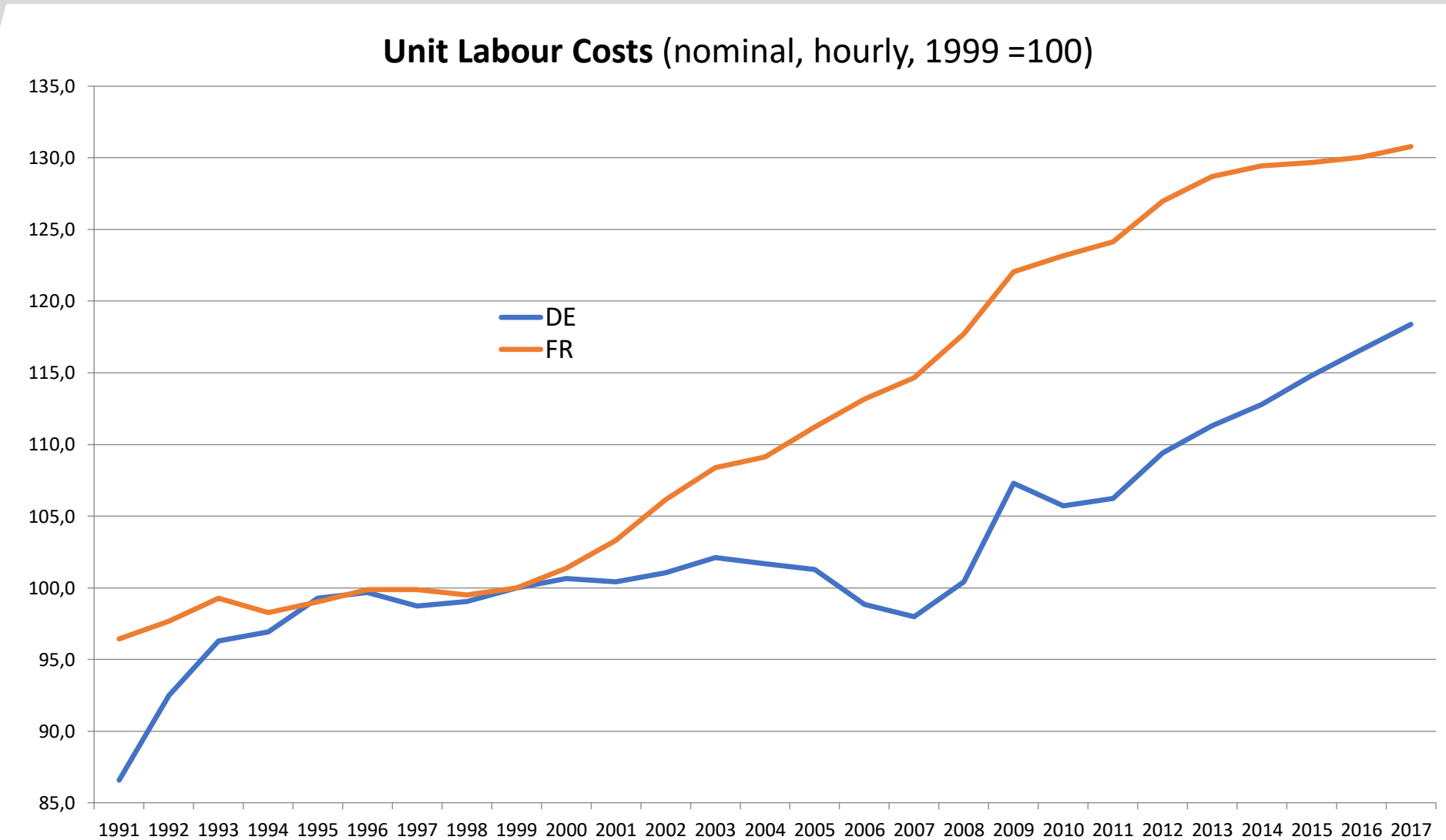


## Comparison of growth models in Germany and France

**Unemployment (ILO definition, as a percentage of labour force)**



## Comparison of growth models in Germany and France



# Disclaimer

This material is approved and issued by NORDDEUTSCHE LANDESBANK GIROZENTRALE ("NORD/LB"). NORD/LB is authorised by the European Central Bank (ECB), Sonnemannstrasse 22, 60314 Frankfurt am Main and the German Financial Services Supervisory Authority (Bundesanstalt für Finanzdienstleistungsaufsicht), Graurheindorfer Str. 108, 53117 Bonn.

This material is only to be made available to, is directed only at, and is approved only for distribution to:

persons resident within Germany, the United Kingdom, Ireland, France, Belgium, Luxembourg, the Netherlands, Spain, Italy, Greece, Austria, Switzerland, Norway, Lithuania, Latvia and Estonia. (all such persons together being referred to as "relevant persons"). The investments or services to which this material relates are not available to any person other than relevant persons and should not be relied on by any person who is not a relevant person. Neither this material nor any copy thereof may be taken or transmitted to Canada, Japan or the United States of America, its territories or possessions or to employees or affiliated companies of the recipient based in these countries.

This research report and the information contained therein is furnished and has been prepared solely for information purposes. It is not intended to be an inducement to engage in investment activity. It is furnished for the recipient's private information with the express understanding, which recipient acknowledges, that it is not a direct or indirect offer, recommendation or solicitation to buy, hold or sell, an invitation to subscribe for or purchase, or a means by which any financial instrument may be offered or sold.

All information contained in this material is obtained from sources we believe to be reliable, but which have not independently been verified. Therefore, we cannot assume any guarantee or make any representation or warranty and accepts no responsibility or liability as to the accuracy or completeness of the information contained in this material. Any opinions, forecasts estimations and comparable information given in this material are non-binding opinions of our research staff. Changes to assumptions may have a material impact on any performance detailed. Neither NORD/LB nor any of its directors, officers or employees can assume any guarantee or give any representation or warranty nor does any such person accept any responsibility or liability for the accuracy, adequacy, or completeness of any information or for any loss of profit, indirect or other consequential losses or other economic loss suffered by any person arising from reliance upon any information, statement, or opinion contained in this material (whether such losses are caused by the negligence of such person or other-wise).

Past performance is not necessarily indicative of future results. Foreign currency rates of exchange, fluctuations or similar factors may adversely affect the value, price or income of any financial instrument or related instrument mentioned in this material.

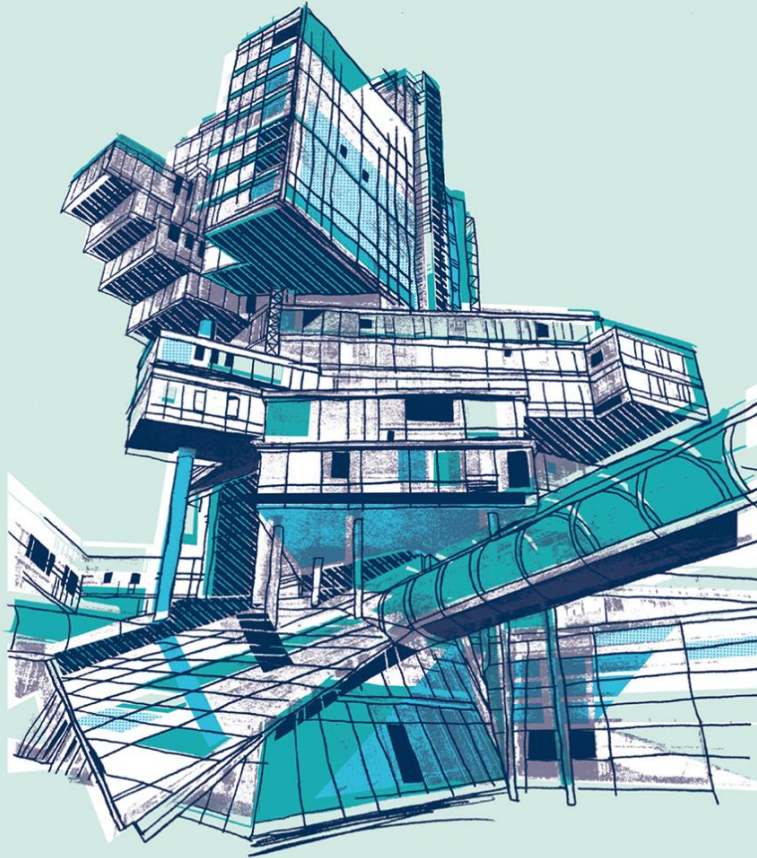
All information in this material is expressed as at the date indicated in this material and is subject to changes at any time without the necessity of giving prior notice or other publication of such changes. NORD/LB gives no representation or warranty for the consecutive accuracy of such information.

Nothing in this report constitutes investment, legal, accounting or tax advice, or a representation that any investment or strategy is suitable or appropriate to the recipient's individual circumstances, or otherwise constitutes a personal recommendation to the recipient of this report and you should not rely on it in that regard. The securities or other financial instruments referred to in this material may not be suitable for the specific investment objectives, financial situation or individual needs of each recipient. This publication does not replace personal consultancy. Prior to taking any investment decision any recipient should contact an independent investment adviser for further and more up-to-date information on specific investment opportunities and for individual investment advice, regarding the appropriateness of investing in any financial instruments or investment strategies discussed in this report.

Any financial instrument referred to herein may involve a high degree of risk, which may include principal, interest rate, index, currency, credit, political, liquidity, time value, commodity and market risk. The financial instruments may experience sudden and large falls in their value causing losses equal to the original investment when that investment is realized. Any transaction should be entered into only upon the recipient's own judgment as to financial, suitability and risk criteria.

This material and its contents may not, whether in whole or in part, be copied, reproduced, redistributed or otherwise published without our prior written consent.

This document was prepared in accordance with the applicable provisions of the German Securities Trading Act and of the German Regulation on Financial Analysis. NORD/LB Research is independent, from an organisational, hierarchical, functional and locational perspective, from any units that are responsible for issuing securities and for investment banking, for securities trading (including proprietary trading) and sales, and for lending business.



**Your contacts:**

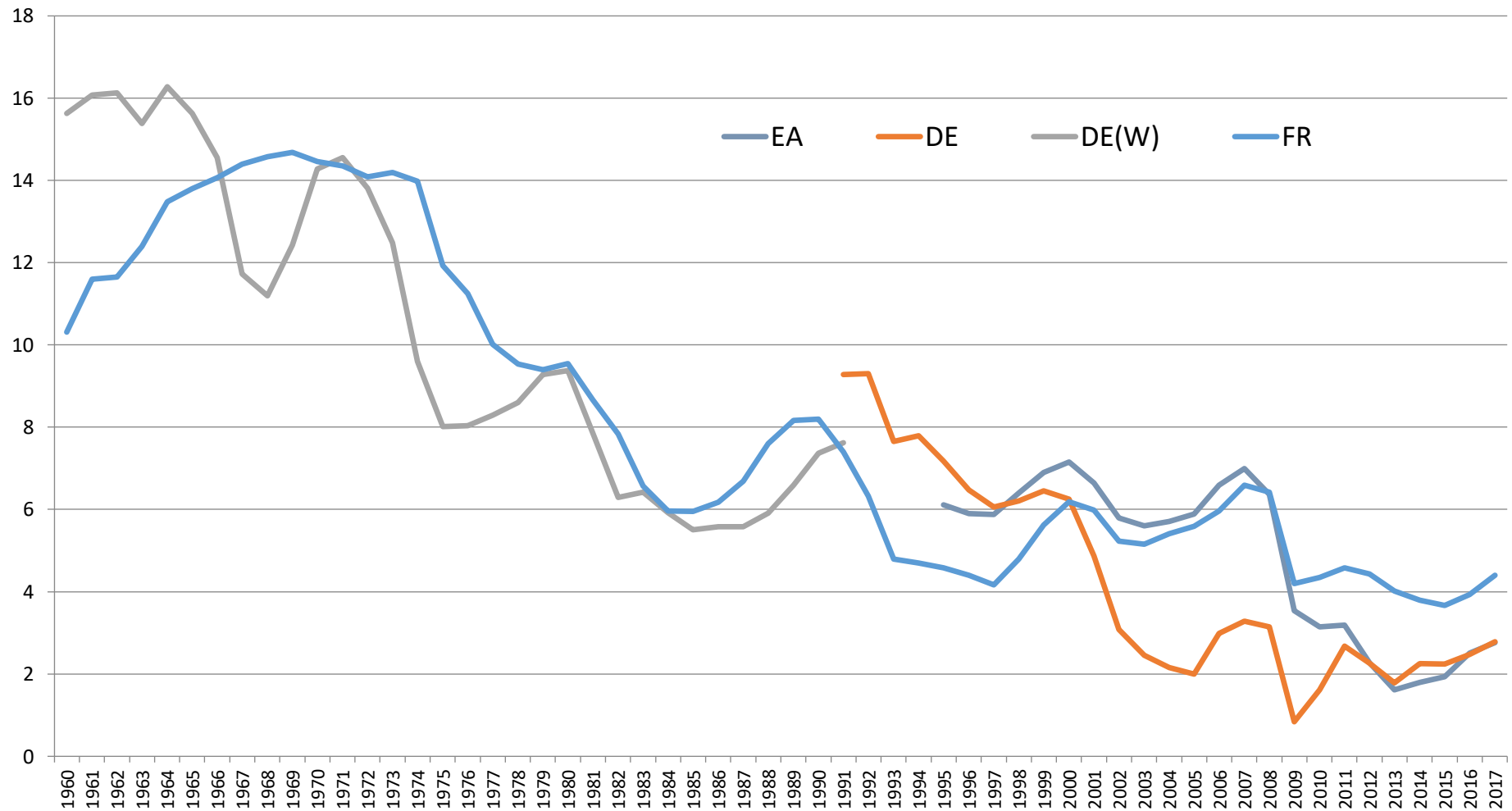
Torsten Windels  
[torsten.windels@nordlb.de](mailto:torsten.windels@nordlb.de)

Tobias Basse  
Tel.: +49 (0)511/ 361-9473  
[tobias.basse@nordlb.de](mailto:tobias.basse@nordlb.de)

Thank you very much for your attention!  
... Questions?

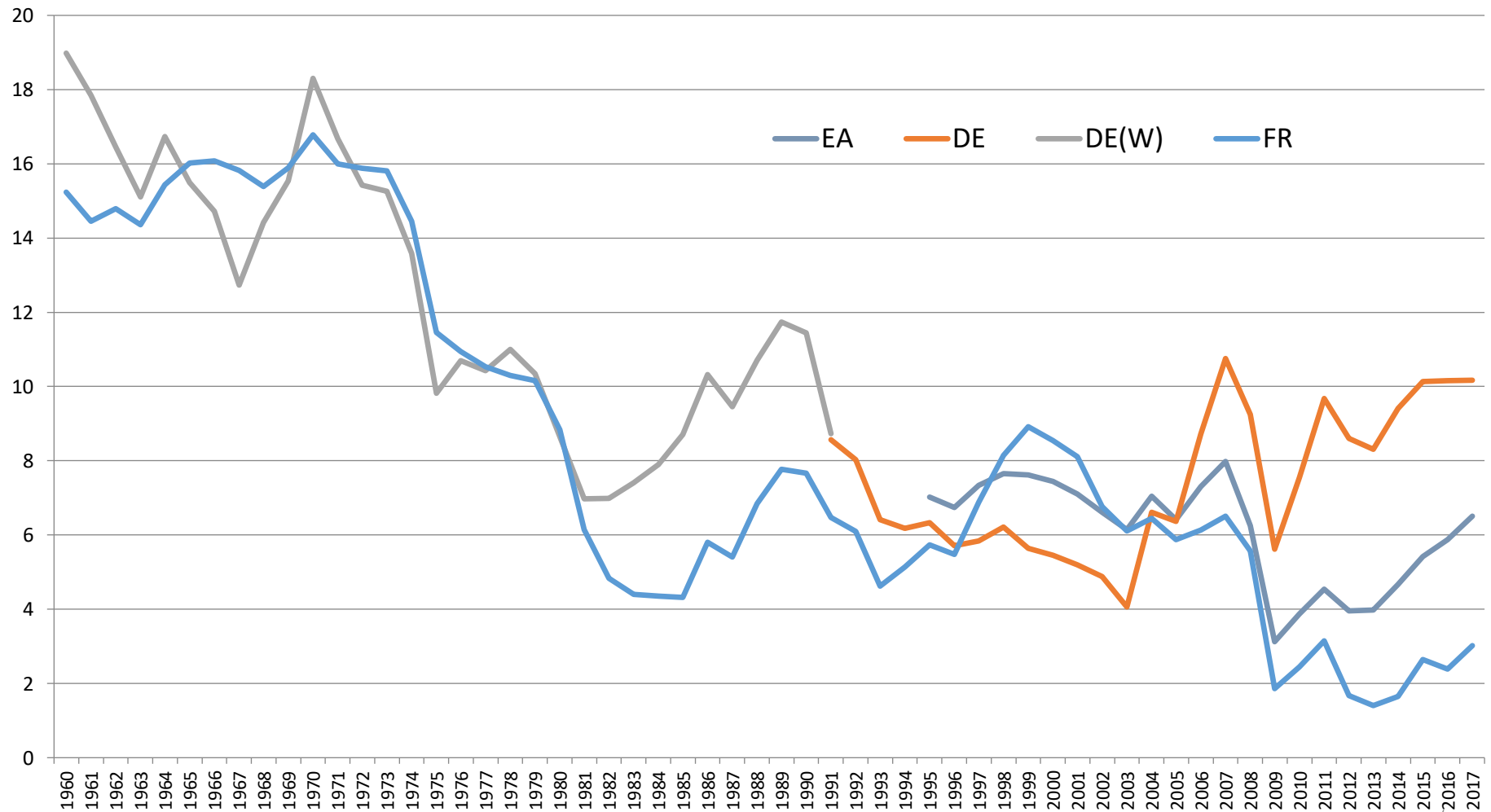
## Comparison of growth models in Germany and France

**Net fixed capital formation** (nominal, as a percentage of GDP)



## Comparison of growth models in Germany and France

**Savings** (national, net, as a percentage of GDP)



## Comparison of growth models in Germany and France

**Excess of savings** (Net savings minus Net fixed capital formation, as a percentage of GDP)

